

The Cleobury Clarion

SERVING CLEOBURY COUNTRY

NOVEMBER 2022

WINTER WARMTH WELCOME

There are occasions when I sit at my computer and simply feel a surge of pride to be the editor of this newsletter. Like printing Liz Smith's letter in the October issue, advising that the Parish Church will be open seven days a week through the winter to provide basic heat for those who cannot afford to switch on whatever fire they have at home.

This month we take another step down the road of simple human decency, which you'll find on Page 7 under the title of 'Winter Warmth welcome in Cleobury.' It lists the known places where you can find warmth, hot food and drinks and a feeling of welcome: The Parish Hall, The Parish Church, The Market Hall, St Mary's Community Room on Love Lane, Cleobury Library and Cleobury Community Hub. Prices range from a free lunch up to £5. This is big hearted Cleobury showing its best side again. Wonderful.

GOLD MEDAL WINNER IN POLAND

Liz Bishop rang on deadline day plus two with some news too good to ignore:

Excellent news about Charlie Brown, a local young athlete. He was educated at Lacon Childe School and is now studying at Bath University.

Last month he was invited to represent Great Britain in Poland at the Modern Pentathlon, which involves fencing, riding, swimming and running. The result was a Gold Medal!

Charlie was also eighth overall in the Youth World Championship. What next for this talented young man? The Commonwealth Games? Who knows?

YOUTH HONOURED

Two local young ladies were part of Her Majesty Queen Elizabeth's funeral parade that was such an impressive spectacle as it was broadcast worldwide.

Hattie Haycock joined the Royal Navy in May and was

selected as a member of the squad pulling the gun carriage that carried Her late Majesty's coffin. She was one of fifteen girls selected after initial training and every day put in twelve hours to ensure everything was right on the day.

May Carter, representing the Far Forest and Rock branch of the Royal British Legion, was one of the 70 Standard Bearers at the Cenotaph during the Royal funeral, again after detailed training and rehearsing before the ceremony. She was awarded the Royal British Legion's Certificate of Appreciation, the highest honour available to a member of the Legion.

Two fine young ladies, tired but exhilarated by the honour and the experience to be part of such an historic occasion. What a wonderful memory to keep forever; our congratulations to both of them.

WELCOME

Mr Sunak. We do hope you'll stay for a while.



Glenys Turpin Reflexology



Reflexology is a non-invasive form of complementary medicine. It involves a method of treatment in which pressure is applied to the feet or hands to treat a wide range of ailments and is effective in promoting deep relaxation and well-being.

Reflexology does not claim to cure, diagnose or prescribe. It may be used alongside orthodox medicine and may be helpful with stress related symptoms and other conditions.

For more help and information contact Glenys...

5 New Road, Cleobury Mortimer. glenyurp@hotmail.co.uk 07763 332759

Diploma of The Bayly School of Reflexology, Member of The British Reflexology Association

MOBILE FOOT HEALTH CARE

Providing a thorough nail and foot care treatment in the comfort of your own home.

Registered and insured practitioner.

STACEY WILLIAMS FHP Dip RFHP

07794 022 618



Victoria Allen Funeral Services

An Independent Family Business offering a
Personal and Professional Service

Over 25 years' Experience

Competitively Priced

Private Chapel of Rest

Golden Charter Pre-Paid Funeral Plans

Covering All Areas

Home Visits Available

01584 879035

24 Hour Service

8 Charlton Rise, Ludlow, Shropshire, SY8 1ND
www.vallenfuneralsludlow.co.uk
Email: vafs@btinternet.com



The Cleobury Clarion, November 2022

Volume Eighteen - Edition Eight



There are about 2,000 native apple varieties in England. 55 were on show at the Stottesdon. Page 17.



Jenny's Memorial Tribute.
See Page 37.



Prize winners at the Horticultural Society contest.
See Page 53.

And On Other Pages....

5 - Rock Church Christmas Fayre
7 - Winter Warmth Welcome
9 - Catherton Common Update
11 - Cleobury W.I's Centenary
13 - Terry Henderson
15 - Another Hobson's Success
19 - Borders Classic Bike Show
21 - Stepping Out! Walking News
23 - November in the Wyre Forest
25 - Philip Dunne MP

29 - The Manor House
31 - All Change at Cleobury RFC
32/33 - Doddington Lodge
39 - Cleobury Mortimer Benefice
41 - Simon Morton on Gardening
43 - Robin Hood at Tenbury Wells
45 - Mrs Grumpy
47 - The Social Calendar
51 - Neighbourhood Development
57 - Let's Beat the Scammers



**cleobury
wash house**

DRY CLEANING & LAUNDRY SERVICE
20 HIGH STREET, CLEOBURY MORTIMER
01299 270571
HOUSEHOLD & COMMERCIAL WORK WELCOME
FULLY ATTENDED, OPEN 7 DAYS

Self Service ~ Full Service Wash/ Dry/ Fold/ Ironing ~ Large Machine for Big Items
Service Washing for Duvets/ Blankets/ Sleeping Bags ~ Team Sports Kit Laundry Service
Equestrian Rug Cleaning ~ Laundry Service for Pet Items
Professional Shirt Service ~ Nikwax Wash & Proof for Outdoor Clothing

.... the place to air your dirty laundry!



RED HARE

45 HIGH STREET
CLEOBURY MORTIMER
WWW.REDHARESALON.CO.UK

01299 270702

YOUR
HAIR
IS
OUR
BEST
ADVERT

PPD FREE - PARABEN FREE - SULPHATE FREE - CRUELTY FREE

“Red Hare now offers a private hairdressing room. Perfect for those wanting more privacy, peace and quiet“



CLEOBURY CHIROPRACTIC

31 High St. Cleobury Mortimer DY14 8DQ

JS James
Smith
OSTEOPATHS

We offer both **CHIROPRACTIC** and **OSTEOPATHY**,
using gentle methods suitable for all ages.
Appointments available outside of normal working hours.
Both practitioners are fully registered, insured & regulated.

Sue Brown
MA MSc DC MMCA
CHIROPRACTOR

- * BACK PAIN * SCIATICA * POSTURAL PROBLEMS
- * JOINT PAIN * HEADACHES (arising from the neck)
- * Some SPORTS INJURIES

PLUS * **COMPUTER (DSE) WORKSTATION ASSESSMENTS**
* **BACK CLASS** – Weekly exercise class for those with back/neck pain.

Hands for Heroes
Free Chiropractic Care for War Veterans



iO
THE INSTITUTE
of OSTEOPATHY



01299 519351 / 07932 000028 / 07506 287191

www.notjustaboutbackpain.com

www.jsosteopaths.co.uk

GCC registered
General Chiropractic Council
www.gcc-uk.org

 **General Osteopathic Council**
I'M REGISTERED
Registration no. 9254
www.osteopathy.org.uk

INTERESTED IN GARDENING?

Would you like to join us?

We are local people who meet on Mondays to hear speakers on gardening topics, or you may prefer to just come as a visitor.

Contact Linda on edandlinashman@gmail.com for more information or Steve on stevetodd@uwclub.net for details of our allotments.

CLEOBURY MORTIMER HORTICULTURAL SOCIETY

MELVILLE

METHODIST CHURCH

How good to hear from this prominent Farlow and Oreton landmark. Ruth Downes writes:

November 9th Soup Lunch 12.30-2.00 p.m @Melville

November 26th, Christmas Fayre at Farlow and Oreton Village Hall 10.00-2.00, if anyone would like to have a table please contact Joanne Gibbon on 01584 891553

December 7th- Christmas Soup Lunch 12.30-2.00 p.m @Melville

ROCK CHURCH CHRISTMAS FAYRE

The very attractive Rock Church will be holding a Christmas Fayre on Sunday, December 4th, from 11.00 through to 4.00. You'll find stalls with handmade crafts including woodwork, jewellery, gifts, cards, floral art, ceramics, plus tea and homemade cakes. It wouldn't be a Christmas Fayre without homemade cakes, would it?

If you need more details or want to book a stall, talk to Georgina Feather on 01299 266353.

CLOWS TOP GARDENING CLUB

November is the month for our AGM - but do not let that put you off, the business side of the evening does not take long. (Like most AGMs everything has been provisionally agreed previously!) though of course the members are free to have their say on the night.

It is the last meeting of the year and we treat it as a social evening. Members are invited to bring a plate of sweet or savory food to share.

Elva has also arranged an illustrious speaker for our entertainment - Dr. Pam Davenport of "Chilli Zoo" fame. The enterprise produces chilli jams and oils, chilli marmalade, and dried chillies. These products are sold in shops from Ledbury to Ludlow and four towns in between.

Dr Davenport says that chillies "lift spirits, act as an aphrodisiac, may speed up weight loss and add something extra special to all manner of dishes" There will be samples available to purchase on the night, (Christmas is coming...)

Do come along and join us at 7.45pm, don't forget the flower of the month competition and your magazines to swap.

See you at 7.45pm on Wednesday the 23rd.

Judith Lawson

FAREWELL, PETE

Pete Andrzejewski has been a Clarion advertiser of his PA Electrical and Security service for many years. Quiet spoken, always paid his bill in cash and on time and happy to help you in an emergency. He's chosen to retire and take life a little easier. Thanks for your support, Pete.



The Oak Boy
TRADITIONAL OAK FRAMING
SINCE 2011
07398 233443

John Caswell
Johnjocaswell@yahoo.com

SERVICES AVAILABLE

- Flooring
- Manufacturing & fitting doors & windows
- Kitchens
- Cladding
- Studwork
- Bespoke Oak Framing
- Landscaping
- Patios
- Brick & Stone work
- Roofing, Tiling, Guttering
- General Building
- Property Maintenance

Call now for a Free Quotation!



CM BESPOKE CARE

Q Care Quality
Commission
Registered

S P I C
Shropshire Partners In Care

Personal, Nursing and Domestic care.
Tailored to your needs.

Call for a free consultation

Tel: 01746 718816
Mobile: 07943834132

www.cmbcare.co.uk
www.facebook.com/cmbcare
email: cmbbespokecare@btconnect.com



07971 361901 or 01299 832484

Complete Bathroom Installations
Bathroom Refurbishment or Repairs
Wet Rooms
Professional Wall and Floor Tiling



For a quality and guaranteed service, call Stuart for a free quote
Highly Recommended / References available - see my reviews on www.freeindex.co.uk

FOR THE BATHROOM YOU DESERVE!

Flowers By Fiona *est 1991*

Fresh Flowers made to order
Special Occasions
Weddings, Anniversaries, Birthdays
Sympathy Tributes

19a High Street,
Cleobury Mortimer

Tel: 01299 272 995



Phoenix Environmental Ltd.
Contaminated Land Consulting and Contracting

Bringing 17 years of experience to bear, we provide straightforward advice help guide you through planning, or deal with your contaminated land, geotechnical and geo-environmental issues.

Phoenix Environmental offer both site and office-based services including:

- Regulatory Liaison and Planning Approval
- Phase 1 Desk Studies (Geology, Hydrogeology, Hydrology, History)
- Intrusive Investigation (Phase 2) Design and Application
- Trial Pitting, Cable Percussive Boreholes, Dynamic (Window) Sampling
- Flood Risk Advice
- Geotechnical Investigation/Advice, Foundation Advice
- Risk Assessment (GQRA/DQRA)
- Remediation Strategies/ Verification Reporting
- Environmental Audits/Site Audits
- Site Based engineering and supervision
- Drone Surveys/Media Production



We'll be there to guide you through every stage.
www.phoenixenviro.co.uk

Contact us: email. enquiries@phoenixenviro.co.uk Tel. 07800 646691

What a great piece of news this is. Warm places, some with warm food, to make you welcome through the winter. Never mind the weather, enjoy the welcome.



Winter Warmth welcome in Cleobury

CLEOBURY MORTIMER PARISH HALL

We welcome you to lunch in the Parish Hall, every 2nd and 4th Tuesday of the month, starting in October

Enjoy a delicious home cooked lunch with – two courses for £3 with the option of staying with The Friendship Club to enjoy an afternoon of board games.

Pre booking is required – please contact 01299 271713 by the previous Sunday.

ST. MARYS CHURCH

'Drop in' every Thursday

10-11.30am for a free tea/coffee and chat - and a free light lunch at lunchtime

The church will be open every day between 10am – 4pm as place that is warm and welcoming

COCO COFFEE MORNINGS

Market Hall (upstairs)
2nd and 4th Wednesdays 10-12,
Coffee, refills & Home-bakes £2

ST. MARY'S PLACE COMMUNITY ROOM

Age UK Afternoon tea of sandwiches & home-made cakes, tea & coffee £5

1st & 3rd Wednesday of the month
2pm to 4pm.

Contact Sarah 01299 272628 for details and to attend

CLEOBURY LIBRARY

Open as a warm and welcoming place:
Monday to Friday 9am- 5pm
Saturdays 10am – 12pm

CLEOBURY COMMUNITY HUB

Mondays: Open for a warm space with a friendly warm welcome for all, with board games too. 9:30am - 6:30pm: Lunch is free and will be served from 12:30pm. Lunch will always be a seasonal soup with fresh bread. (Lunch offer from 3rd October)

Tuesdays: Open for a warm space with a friendly warm welcome for all, with board games too. 9:30am - 5:30pm.

Fridays: Open for a warm space with a friendly warm welcome for all, with board games too. 9:30am - 5:30pm

<https://www.warmwelcome.uk>

IN PRAISE OF....

Recently I managed to lose one of our window lock keys, so what? I hear you say.

I went to a well established ironmonger in Kidderminster and despite the really helpful staff spending 15 minutes searching "on line" for a duplicate key and trying different "blanks" it was all to no avail.

I had virtually forgotten all about it until I was walking past "Cleoburrs" and noticed that the ever obliging Robbie the proprietor of our local "Aladdin's Cave" now offered a key cutting service. So in I went and despite Robbie being very busy he said: "I'll have a go".

In around 10 minutes in between serving a steady stream of customers, Robbie

emerged from his little workshop with a replacement key and said "try this but if it doesn't fit, there will be no charge" and despite my protestations would not accept my offer of payment.

The key fitted perfectly and the cost was very reasonable. Exit one very satisfied customer.

Phil Westwood

TDC CARPENTRY SERVICES

Fully insured qualified professional
Excellent workmanship and quality customer care
From hanging doors, fitting kitchens to bespoke projects

Tim Clare - 07890 519980

Professional. Affordable. Local.



Electrical Installations

No matter the size, we can gladly undertake all Domestic, Commercial and Industrial installations you require.

A family run business, with over 25 years industry experience.

From period properties to agricultural solutions, we provide a professional service every time. We also do call outs and emergency work.

Renewable Energy

Protect yourself from rising energy bills by considering renewable energy.

Solar PV is the most accessible way you can save energy by producing electricity from the sun. Earn a tax free income from the electricity your system produces.

Speak to us about how renewable energy can benefit you or your business.

Whatever your query, give us a call.

T: 07971 096267 / 08450 564173

W: www.awe-services.co.uk

Two Staks, Eagle Lane, Cleobury Mortimer, Worcs. DY14 8RA



CATHERTON

COMMON UPDATE

What a spring and summer we have had! Hardly a drop of rain for months, but I am glad to say we have had no serious fires on the common. I know it was a serious worry for many residents that I have spoken to and I was deeply concerned. I hope that this is a sign of the care and respect that both locals and visitors have for this unique and important area.

Although the warm, dry weather was pleasant for us it is not great news for the common where the many wetter parts of the habitat are so important for our unique collection of wildlife. Looking back I find that both last summer and the most recent winter both had exceptionally dry periods and less rain than normal. Our monitoring of the reserve this year has shown that whilst the valley mire near Cramer Gutter is still wet as it relies on deeply fed springs, many of the other wet valley bogs and bell pit pools are very dry and show changes to the important plant collections that rely on wetter conditions.

Our rain seems to come in huge dollops these days and runs off into the streams and

rivers rather than having time to soak into the soils and collect in the hollows. Perhaps another sign of climate change.

The additional problems this drying out of the habitat brings is that plants such as bracken and gorse that thrive in the drier areas seem to be more dominant rather than in balance with the heather, bilberry and grasses.

The good news is reports of nightjar being heard on the common this year, and more than one. They are another rare ground nesting bird. If they move in this might be a first for the county! But perhaps more of that next time.

Clive Dean – SWT Reserves Officer South

BREAKFAST CLUB

21 members and guests turned out for a meeting of the Club on October 11th, to hear Judy Sant current president of the Cleobury Mortimer branch of the WI, which was founded in 1922, speak. Judy's mother joined the WI in 1951. Judy skillfully interwove the national and international history of the WI with the history of the Cleobury branch, and supplemented this with items collected by her mother.

Some may be surprised to learn that the WI was founded

in Canada in 1897, by a mother who wished to increase the availability of education for women, and to reduce the isolation felt by women in rural communities. The first branch in UK was founded in Wales in 1915, and in 1918 a National Federation was formed. Scotland had a separate organisation. Not surprisingly, one of the concerns of early WIs was women's suffrage, but they took up many other social causes which are still relevant today, such as Local Authority housing, pollution, and fair pay for women. Homely skills, such as crafts and cookery, also command a lot of attention, but the 'Jam and Jerusalem' image often ascribed to the WI very much understates the breadth and importance of what they do. It is also worth mentioning that her dynamic leadership has revived the fortunes of the branch, which was in danger of closing only a few years ago, but now has a very healthy 45 members.

Next month our meeting will be held on 8 November, and will be addressed by Kelvin Lane. Those wishing to attend should contact Angela Drennan (270636) to book places.

Mark Baldwin



The Well Being

Holistic Therapies

Cleobury Mortimer DY14 8AS

www.thewellbeing.co.uk

April Boardman

Reiki Master ITEC MFHT Dip Hyp

Do you have aches & pains, ongoing health issues or just need to relax? Help is at hand!

Deep Tissue & Remedial Massage

Reiki & Crystal Healing

Hot Stone Massage-Aromatherapy- Reflexology

Pregnancy Massage & Hypnotherapy

20% off your 1st treatment!

Tel 01299 513148 or 07881494036 or Book Online!



Care At Home

TLC Care at Home are a well-established family run, Home Care Provider who have built up an excellent reputation within our local communities

We have recently been rated as **OUTSTANDING** by CQC and this puts TLC Care at Home in the top 3% of providers in England



Professional care and support in your own home

Our dedicated Care Team are here to help support you with 24/7 care provision should it be required. At TLC Care At Home, we are dedicated to supporting people with wide range of needs, including Dementia, Acquired Brain Injury, Physical Disabilities, Learning Disabilities, Sensory Impairments and supporting our aging population.

Depending on your individual needs, we can offer varying degrees of support from young adults to very mature people. TLC Care at Home are here to help anyone who requires care and support to enable them to remain living at home for as long as it is safe to do so.

Comprehensive range of care services

- Domiciliary Care
- Palliative care
- Personal care
- 24 hour care
- Companionship
- Dementia Care
- Overnight Care
- Elderly Care
- Care for young adults
- Supporting younger people
- Domestic services: cleaning, cooking, washing and shopping
- Collections of pensions or prescriptions
- Trips out and about

Please contact us now for more information 01299 272 897

Email: wecare@tlc-careathome.co.uk

Website: www.tlccareathome.com



Professional Family Estate Planners

- Wills
- Lasting Powers of Attorney
- Free Will reviews
- Probate support
- Care home fee avoidance
- Free funeral plan with every Will
- Family Protection Trusts



“A lifetime’s attention to complex legal issues as a retired Detective Superintendent and now a Private Client Lawyer means you can definitely trust Mark and his daughter Lauren to write your Will”

T: 01299 251442

E: info@ambalegalservices.co.uk

W: ambalegalservices.co.uk

- Appointments by telephone, video link or in the comfort of your own home
- Over 45 years’ experience in law
- Friendly and professional support for you and your family
- Call us up for a chat to see how we can help!



DOROTHY ASTON

Aston, Dorothy of Doddington, passed away peacefully on 4th October 2022, aged 91 years.

Beloved wife of Maurice, much-loved Mum of John, loved and dearly missed by all her family and friends.

A Service of Dorothy's life took place on 27th October at St John's Church Doddington. Kind donations received in Dorothy's memory will be shared between Shropshire Air Ambulance and Macmillan Cancer Support and may be sent c/o the Funeral Director.

All enquiries please to: Victoria Allen Funeral Services, 8 Charlton Rise, Ludlow SY8 1ND. 01584 879035

CLEOBURY W.I.

Our October meeting was well attended by members and visitors from neighbouring branches of WI. The subject of the evening was Coral Crochet, and we were not sure what to expect! Rather than being a demonstration of how to crochet, this was a fascinating awareness-raising talk. Angela Thompson spoke about how climate change is the main cause of bleaching damage to coral reefs around the world. Her interest began when she took a tour to a coral reef island in a glass bottom boat during a visit to Australia. Angela explained how coral had

originally been depicted in 2005 in Australia, using crochet and knitting techniques, and showed a beautiful display made by Worcestershire Federation of WI, that had been exhibited at the Three Counties Show in Malvern.

Unfortunately, the anticipated defibrillator training which had been scheduled for October had to be postponed until the new year.

There are two important events in November. On the 8th we welcome the return of Mark Baldwin who will tell us about (and show us) the enigma machine and the role of women at Bletchley Park during WW2. Visitors are welcome to what promises to be an interesting evening. The cost for non-members is £5 to include refreshments.

Remembrance Sunday is on 13th November and members are invited to join the parade to church, meeting in the Talbot car park at 10.30am. A minute's silence and playing of the Last Post will take place by the War Memorial, then those who wish can proceed into church for the Service of Remembrance.

Val Sniadowski

FROM THE BANDROOM

After a quiet October, we move into November with another social weekend band trip to

Bath. A city tour is planned along with a theatre trip to see Fisherman's Friends.

On Remembrance Sunday, the 13th, the annual parade will be led by the band down the High Street (hopefully this year we won't have to dodge the pot holes)

We will also be playing at the DeBeers Garden Centre Craft Fair on Saturday 19th, with an opportunity for some early Christmas shopping.

Tickets are now available for our Christmas Concert, this year to be held in the Parish Hall on Sunday 18th December at 7.30, tickets are priced at £10 and available from Amanda on 01584 891199, the Wash House or any band member.

We are currently seeking bass players to join our brilliant band. Please get in touch with Amanda on the above number if you are interested or just come along to practice, Tuesday 7.30pm at the Parish Hall.

SILLY BITS

Have you heard about the new Stannah Stairlift Super Express? It gets you upstairs before you can forget what you came for.

My wife has been missing for a week; the police said I should prepare for the worst. So I've been to the charity shop and asked for her clothes back.

Charlton Interiors

UPHOLSTERY & INTERIORS

Rosemary Jones

Mob: 07837 609229

Phone: 01584 861823

Email: info@charltoninteriors.com

www.charltoninteriors.com



BESPOKE YOGA TUITION



Relax Breathe Stretch Tone

One to one Yoga lessons

BWY trained teacher with over 15 years experience

Can travel to your home

Angela Kazimierczuk

07870 506655

CLEOBURY MORTIMER PARISH HALL

The largest hall in the area

Would you like to celebrate an event, party, wedding, or just a get together?

We are able to cater for small or large parties, sit down dinner parties for up to 100 people with or without a bar.

Come and have a look at what we can offer..To book, call Janet on 01299 271070

‘FLICKS IN THE STICKS’

7.30 Saturday November 19th

“The Angels’ Share”

Narrowly avoiding jail, new dad Robbie vows to turn over a new leaf. A visit to a whisky distillery inspires him and his mates to seek a way out of their hopeless lives.

Licensed Bar. Admission £5.00

Before the movie, join us for a tutored **WHISKY TASTING**. Learn how whisky is made and what to look out for in the glass, Taste three different whiskies and then try to identify a fourth. Tickets £15 on the door.

LUNCH WITH THE FRIENDSHIP CLUB

Next lunch 8th November - only £3 - book by the Sunday before 01299 271713

Do you know a 2, 3 or 4 year old who would like to join our fantastic nursery?



Stottesdon Gateway NURSERY
We really care and make learning fun

We can offer:

- A safe and nurturing learning environment with dedicated and caring staff.
- High quality provision with strong links to Reception.
- An amazing outdoor area and use of the school facilities and space.

- Nursery places for 2, 3, 4 year olds, available from September 2021
- From 15 - 30 funded hours available.
- BEFORE & AFTER SCHOOL & HOLIDAY PROVISION for children aged 2 - 11 years old.

Ofsted Outstanding Provider

TO BOOK A TOUR :

Stottesdon C of E Primary School

Stottesdon

Shropshire

DY14 8UE

TEL: 01746 718617

Nursery and Wrap-around sessions (term-time)		Fees
Early Start	7:30am - 8:00am	£4.00
Breakfast Club	8:00am - 8:45/9:00am	£4.00
Morning Session	9:00am - 11:30am	£10.00
Lunch club	11:30am - 12:30pm	£4.00
Afternoon Session	12:30am - 3:00pm	£10.00
After School Club	3:00pm - 5:30pm	£10.00

READING GROUP

A small group gathered in October to give opinions on 'Midnight In The Garden of Good and Evil'. The author, a New York journalist, rented an apartment in Savannah and wrote about the folk he met. A variety of crazy, wonderful and outrageous characters including a voodoo lady. Reads like a novel but most facts can be verified. It was generally agreed the writing was good, with dialogue bringing it alive for the reader. The latter part of the book covers a murder trial, or in this case trials, 1981-1989. A beguiling picture of a Southern city, summed up by a member as: -'informative, colourful, entertaining, shocking at times'. Although not appreciated by everyone it was deemed a good choice. 'Why I'm No Longer Talking To White People About Race', another non-fiction, should produce some interesting conversation when we meet again on November 21st.

Geraldine Kimber

ST JOHNS, DODDINGTON

November is Christmas Fair month and we look forward to welcoming you! It's on Saturday 26th November from

2.30pm in Doddington Village Hall, with games, refreshments and a variety of stalls. If you'd like to book a stall, please let us know asap. An update on our Sponsored Ride and Stride event in September: methods of going up/down the church path included dog walking, 3-steps-forward-2-steps-back (actually clocking up 6km travelled in an hour!) and juggling by Joey, with a bonus juggling demonstration thrown in.

The most heart-warming was Doris, who has only been able to come back to church since our path was made accessible, positively racing up the path using her frame for support and her son with the "safety vehicle" of a wheelchair barely able to keep up!

Thanks to those who sponsored us; we raised £370 in total, half of which we keep and the other half goes to Shropshire Historic Churches Trust to help them make grants to churches such as ours – an excellent virtuous circle! For up to date news follow us on Facebook: @StJohnsDoddington, or check our website: www.achurchnearlyou.com/church/10505/ Email:

stjohnsdoddington@gmail.com

Celia Gibb 01584 318036

TERRY HENDERSON

I would like to thank everyone who came to the thanksgiving service for Terry and the kindness and support shown by relatives and friends. I know he would have been humbled to see all those who attended. I would also like to thank everyone for their kind donations amounting to £560 in Terry's memory.

It was the family's wish that any donations were given to the Midlands Air Ambulance and the Critical Care Unit at Queen Elizabeth Hospital. Two charities that enabled my sons and I to spend precious moments with him before his passing. For that we are eternally grateful.

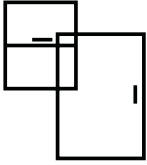
Sue Henderson

CHRISTMAS CRAFT FAIR

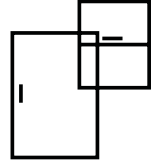
On December 4th there will be a Christmas Craft Fair at the Parish Hall, starting at 11.00. So you can buy your Christmas presents without having to travel and at the same enjoy tea, coffee and if you want to spoil yourself just a little, a piece of cake.

Kim Stanley
30, High Street
Cleobury Mortimer
Shropshire
DY14 8DQ

Tel. 01299 271800
www.kimstanley.co.uk



Ashley Bannister Windows & Doors



- UPVC Windows & Doors
- Composite Doors
- Porches & Conservatories
- Glass Unit Replacement
- Fascia, Soffit & Guttering
- Handles & Letterboxes
- Hinges & Window Restrictors



No Job Too Big or Small
Certass Approved Installer
Local Tradesman Based in Highley

ashban94@hotmail.com
Ash: 07817 785245



Twit - Twoo Falconry

- **Static and flying displays with owls & falcons**
- **Fetes and fayres**
- **3 hour bird experiences based in clows top**
- **Garden parties and birthdays**
- **1-2 hour talks for indoor hall and outdoor visits**



**For quotes and bookings ring Steve Woodison 07738014884 or
Email scw1960@hotmail.co.uk**

MIKE AND SHELLEY ROBERTS

Haulage Contractors

Supplier of Aggregate and Asphalt products

12 Lacon Close, Cleobury Mortimer DY14 8EF

07860 669350

07966 045012

CLOWS TOP VICTORY HALL

On October 8th the Hall provided the venue for a Murder Mystery evening which came with a 3 course dinner. The guests were provided with a menu of character details which helped to start the investigative process. The culprit was eventually revealed to the large number of amateur sleuths.

On November 26th there will be a Christmas Fair at the Hall between 1pm and 4pm. Stalls can be booked at £10 each; contact details below.

Ring 07738 014884 or 07379 959895, email admin@clowstopvictoryhall.co.uk or visit the Clows Top Victory Hall Facebook Page.

CHRISTMAS FAIR

Severn Hospice Crafters and the Stottesdon and Cleobury Hospice Support Group will be holding a free to enter Christmas Fair at Broome Park Farm, Catherton Road, CM, DY14 0LB on Saturday 19th November from 11am - 2pm. There will be homemade cakes, hot drinks, Severn Hospice Christmas cards, raffle, tombola and hand made crafts on sale, all proceeds for Severn Hospice, plenty of parking.

ADVENT SOUP LUNCHES

Neen Savage WI are holding Advent Soup Lunches upstairs at Cleobury Mortimer Market Hall on every Thursday in December - 1st, 8th, 15th and 22nd from 12.30 - 1.30pm. For just £5 you will get a choice from 3 homemade soups followed by a seasonal pudding - 1st - apple crumble, 8th - sticky

toffee pudding, 15th - chocolate sponge and 22nd - mince pies! All proceeds will be donated to the Nightingale Nursing Fund. The Stottesdon and Cleobury Severn Hospice Support Group will also be running a raffle in aid of the Severn Hospice at the lunches.

FLICKS IN THE STICKS

On November 19th at 7.30 we will be showing *The Angels' Share* - a film by Ken Loach.

Narrowly avoiding jail, new dad Robbie vows to turn over a new leaf. A visit to a whisky distillery inspires him and his mates to seek a way out of their hopeless lives. A bittersweet comedy which proves that sometimes in life all you need is a little spirit.

WHISKY TASTING

Celebrating the theme of the movie, before *Flicks in the Sticks*, on Saturday 19th at 6.00 join us for a tutored whisky tasting. Sample three different whiskies and learn how they are made and what to look for in the glass. Then try to identify a fourth. Tickets are £15 on the door.

LOOKING AHEAD...

At 7.30 on January 27th there will be a Burns Supper in Cleobury Parish Hall, in aid of the restoration fund. Feast on haggis, music and poetry, watch Scottish country dancing and hear a piper. Tickets on sale in December - more details in the next issue.

CREATIVE WRITING

'Spinsters' was the subject at our October meeting, when Lilian sent a 1,000 word piece written for magazine and Marian kindly read it for us.

Vivian centred her tale around the remarkable Sarah Margaret Fry, prison reformer, and anti-death penalty campaigner with probably too much good work to do to ever consider marriage.

Marian extolled the virtues of a single life of independence while the mere chairman played safe and simply praised ladies for their existence.

For our November meeting the subject is 'Ambition'. No lack of that in our membership, as we will confirm at the library on Monday the 15th.

ANOTHER SUCCESS FOR HOBSONS - CREDIT WHERE IT'S DHU!

The launch of a stout under the title 'Dhustone' reflects the Hobson's habit of using local ingredients and names. This one commemorates the dolerite rock quarried as Dhustone and has proved to be a true winner.

It took the Silver Medal at the CAMRA Champion Bottled Beer of Britain in May, the Silver award again at the regional SIBA Independent Keg contest and recently the top spot Gold at the Champion Beer of Britain, West Midlands contest. The Gold award came at a blind judging at the Tamworth Beer Festival with a panel of trained tasters. Geoff Cross, CAMRA West Midlands Regional Tasting Panel Co-ordinator, commented: "The scores were quite close, except for the obvious winner. Well done Hobson's for your Dhustone Stout, which was first."

Three awards so far in its first year is a remarkable success, but that's what Hobson's are renowned for.



Find Your Smile at Cleobury Dental Practice

Whether you're looking for dental implants to replace missing teeth, invisible braces for a straighter smile, boosting your confidence with teeth whitening or a dedicated dentist for your regular care, you can find it all here in the heart of historic Cleobury Mortimer.

- Modern, state of the art facilities and the latest dental technology
- Free car parking adjacent to the practice and step-free access to our dentists' surgeries
- Enjoy private dental care from just 47p per day with our membership plans
- Highly experienced in helping those with dental phobias

Services Provided

- Tooth-Coloured (White) Fillings
- Sedation for Anxious Patients
- Teeth Straightening with Braces and Invisalign
- Dental Implants (Replacement of Missing Teeth)
- Emergency Appointments Slots Available (first come first served)
- Hygienist Services
- Private and NHS Care (NHS subject to capacity)

Opening Hours

Mon, Tue, Wed and Fri **9am-5pm**
Thu **9am-7pm**
Saturdays **by appointment only**

Tel: 01299 271 747

www.cleoburydental.co.uk

BDA Good Practice
Member

 **invisalign**
PROVIDER

STOTTESDON - APPLE DAY AND MORE



I'll admit to a love of apples that goes back to early childhood, when I was proud to claim the Ellison Pippin in the back garden as mine. A lovely tart flavour and the winter store under my bed was fragrant for months. So Stottesdon's Apple Day is a favourite for me.

The Fighting Cocks is the centre of the event, with the two community owned presses producing juice for their owners to take away. Just a nominal fiver for the service, but one couple were so happy with the result they parted with £20. Result!

Wade Muggleton is the modest star of the day, with a display of 55 varieties, which is about half of his full collection. Have you ever heard of the Pitmarton Pine Apple, Ticked Pink or the Colwall Quoining? Just three names from a UK total of about 2,000 known varieties.

Wade has a book out and when I've read it I'll tell you more. He gives talks on the subject and only at the end will he produce what looks like a fine English fruit with a gleaming red peel. "Like most so-called English goods today, it actually comes from China," he grins. That's where apples originated, only realised in recent years as that country opened up and another range of varieties was revealed to western eyes.



Wade takes a break with what must surely be a glass of cider.

Another good Apple Day with so much to see, but also the restoration of the parish church to consider. Chris Tibbits reckons something like 122,000 tiles will be laid as the roof work continues and the fabric of the building that dates back over 1,000 years in parts is brought back to full life. A walk around revealed the range of work involved, with ancient graves nestling close to builder's rubble and

beyond them the ancient body of the church itself.



Access to the site over the weekend was easy, but if curiosity gets you in the mood to see for yourself, do please ask permission to walk into the churchyard. It is a place of work and a great deal has been accomplished in quite a short time. Impeding that work would be sad and possibly dangerous.



Just this corner of the church entrance confirms the dangerous state of the building. Please keep clear.

John Brazier & Co

Accountants & Business Advisors

Accounts – Company, Partnership and Sole Trader
Tax Returns – Corporation Tax and Personal
VAT - Returns and advice
Payroll Service including RTI

For a personal and
professional service

Contact John Brazier or Sarah Morgan to discuss your requirements on 01299 271473 or email at info@johnbrazierco.co.uk. Alternatively, you can arrange a meeting at 53, High Street, Cleobury Mortimer, Worcestershire DY14 8DQ

01299 271 473



Bumperscuff Rescue

● Body Shop excellence ● Home convenience

Cost effective car body repairs!

- Bumper scuffs
- Kerbed alloy wheels
- Paint scratches
- Small dents

Free no obligation quotes, all work fully guaranteed Call **Andy Taylor** now on **07834 322216** or visit www.bumperscuffrescue.co.uk

CLEOBURY MORTIMER CARPETS

Supplying and Fitting of:-

- Carpets
- Natural floorings (Cair, Sisal & Seagrass)
- Vinyls

Carpets supplied by: Victoria Carpets, Fibre Flooring
& Alternative Flooring at Unbeatable Prices

Contact Details:-

Address: 26 High Street
Cleobury Mortimer •DY14 8BY
Telephone: H: 01299 270095
M: 07739 186163
Email: garethleach@aol.com
or check out our new website
www.cleoburymortimercarpets.co.uk

INFINITE ELECTRICAL SOLUTIONS

For all your electrical needs:

House rewires

Fuse board upgrades

Electric showers

Need an extra socket or light installed?

No job too small

For a FREE quote

Call Lloyd 01584 811184



WE GET LETTERS

Not many of them, but occasionally a reader will raise a matter that deserves thought, discussion and a reply. Like this one:

Dear editor,

I write in response to October's Mrs Grumpy column. The second paragraph discussed child grooming scandals, the policing of them and the link to race.

If you are going to print an article discussing race, I think it is very important for the purposes of the discussion to be made clear. Was Mrs Grumpy's piece a report on already well documented grooming cases, or a thinly veiled finger-point at one particular ethnic group?

Clarity is key when committing prejudices to print - as this could easily be construed as bigotry-broadcast. Would Mrs Grumpy like to clarify her contribution to the Clarion, so that her no-doubt noble purpose isn't misconstrued?

Kind regards,
Andrew Cadwallader

To which Mrs Grumpy replied:

Andrew

Thank you for your comments on my last piece. I appreciate that these matters have been reported before but this case is just up the road and brings home, to me at least, that this is not a problem confined to large conurbations. The point I was trying to make, perhaps not clearly enough, was that these scandals have been occurring for decades whilst being studiously ignored by the agencies tasked with protecting young adults. Due to a lack of candour over issues of race, such activities have continued to flourish and there is still a reluctance to have a frank conversation around the issues involved. Even now, for instance, when a girl or woman is killed by relatives for refusing to marry a stranger, the dear old Beeb still refers to such cases as 'so called honour killings' instead of 'murder'.

It was not my intention to demonise any specific ethnic group but the fact remains that the vast majority of offenders hail from that community and until this is properly addressed, I worry that this kind of situation will continue to occur.

One last thought: thank you

for taking the trouble to put your point of view across. It's reassuring to see that at least someone is reading the column...

Ariadne J Grumpy

THE BORDERS

CLASSIC BIKE SHOW

Postponed at the request of the school upon the death of Her Majesty Queen Elizabeth II the show was run a month later on October 9th. It's a testimony to its reputation that the school halls were crowded and the Food Hub busy as motorcycles and cars made their way here.

Local bikers did well, with Neil Deller taking two awards with his Nortons, Dave Clarke the Best BSA trophy, Mervyn Smith from Highley the Best Two Stroke with his Spanish Montesa, Arthur Ratcliffe from Neen Savage the Best European with his Italian Moto Guzzi and the AJS and Matchless Owners Club local stand the Best Club Stand.

Outstanding in the results was first timer Terry Pickering with his rare 1930s 500cc AJS, made in Wolverhampton and winning Best Pre 1940, Best AJS and Best in the West as the visitors' choice.

Tracey's last show. She left on a high: £4,000 for the school PTA and Air Ambulance.



Grainger Jones your local independent financial adviser

Grainger lives in Cleobury Mortimer giving the residents and surrounding areas a dependable financial planning service.

- **Wealth Management**
- **Retirement Planning**
- **Investments & Savings**
- **Family & Business Protection**

An initial consultation is available at no charge

To book an appointment or just have a chat, please contact Grainger below.

tel: 07974 100089

email: grainger@meridenfp.co.uk

website: www.meridenfp.co.uk



What can a Nutritionist help with?

- Digestive issues
- Chronic Fatigue
- Sleeping issues
- Painful periods
- Menopause
- Migraine
- Type 2 Diabetes
- High Cholesterol
- Skin Conditions
- Children's Health
- Anxiety/Depression
- Vegan/vegetarian diets
- Weight Management
- plus many more

Visit www.eatyourselfbetter.co.uk to find out more or book a free mini consultation to see what I can do to help you. 07790521636



TURNERS GATES

bespoke sizes at standard prices



A small family run business specialising in quality wooden gates to suit all entrances.

Visit our website: www.turnersgates.co.uk

Drop us an email: turnersgates@outlook.com

Or give us a call on: 01299 270 965



TIME TO CLEAN YOUR OVEN? LET US DO THE JOB YOU HATE

AS SEEN
ON TV

- Ovens
- Grills
- Extractors
- Filters
- BBQs
- Microwaves
- Hobs
- Ranges
- AGAs

Call or go online today for your free estimate

OVENCLEAN
The original oven cleaning specialists

07913 123543
ovenclean.com



Stepping Out! Who's Walking, When and Where.

ROCK PATHFINDERS

November's outing for this popular club, who make visitors welcome but cannot let dogs join their walks.

Thursday, 3rd. 10.00 o'clock from St Leonard's church, Ribbesford, Bewdley DY12 2TQ.

Thursday, 17th. 10.00 o'clock from The Crown Inn, Hopton Wafers, DY14 0NB.

Further information: www.rockpathfinders.uk

CMFA SOCIAL WALKS REPORT

Remember, remember the fifth of November, gunpowder, treason and plot! I expect many of us recall the opening words of the traditional rhyme written to accompany Guy Fawkes Night festivities. Community bonfires and fireworks displays on November 5th have long since replaced the back garden events we had in my childhood. Many traditions remain unchanged over the years, fireworks screeching, bonfires crackling often with an effigy of Guy Fawkes on top, the sweet taste of parkin and of course treacle toffee. As the days get shorter and

colder it is time to wrap up warm and enjoy the Autumn countryside traditions.

Last month the work party had three stiles requiring repair work. One replaced with a gate, a second strengthened and a third needed a dog gate incorporated. They were at Maxfields near the Bridgnorth road, on the CMFA Walk 23 Three Coppices, close together but a distance from convenient parking. We are grateful for the assistance of the landowner who took the heavy equipment and tools to the site for us.

A bright autumnal morning for the Country Walk last month. Ten people gathered outside St Mary's Church for a delightful tour around Cleobury. These walks are usually between three and five miles and take two hours to complete. The next date for your diary is Sunday November 6th at 10.00 am.

Over the last few months 18 and 20 people have regularly joined the Walking for Health walks. We follow many routes around Cleobury, the banks of the River Rea, Pinkham, Workhouse Bank, the footpaths through Glen Caravan Park and past Cleanly Seat are some

favourites. An hour's walk with the option of a hot drink and cake at the CoCo coffee morning. We meet outside the Market Hall on the second and fourth Wednesdays each month if you wish to join us.

On the last Saturday of October our Social Walk was in Abberley. The five mile route went through a beautiful Autumnal countryside of woods, fields and lanes. The steep climb up to the top of Abberley Hill revealed spectacular views over Woodbury Hill.

Recently we spent a few days walking in north Devon. After lunch at a cafe in Lynton we got into conversation with the owner who happened to be the local Walkers are Welcome organiser. He explained that the many fallen trees we had seen were a result of the storms last year. The Exmoor National Park are responsible for the clearance and maintenance work locally. They obviously have a huge task on their hands!

CMFA activities are on our website www.cmfa.co.uk

MORE FOOTPATH NEWS ON PAGE 27.....



WINDSOR PRICE REPAIR SHOP
Automotive

Email: mikeytwonames@icloud.com
Tel: 07468 521816

Unit 1, Hillocks Farm,
Cleobury Mortimer, DY14 0EB.



Mark Pearce

Landscape, Design and Rustic Garden Furniture

- Fencing
- Patios
- Drives
- Decking
- Garden Sheds
- Summer Houses
- Fence Panels
- Log Stores



And Much More

Top Quality Fully Treated Timber Products

Mobile: 07875425028

Tel: 01746718404

Robert Bradley Logs

07794 798616



*Seasoned Firewood, Hardwood,
Softwood or Mixed loads of logs.
Free Local Delivery*



Fresh milk and cream from
Cleobury Mortimer

www.mawleytownfarm.co.uk

01299 270359



SKELLERNS

DOORS & WINDOWS



- UPVC Fascias & Guttering
- UPVC Windows, Doors & Conservatories
- General Home Improvements
- Re-roofing & general building work
- Replacement Glass
- Patio Jet Washing



Free No-Obligation quote. FENSA registered company with years of experience

Call Mike on: 01886 812250 or mobile: 07814 577739

www.skellersndoorsandwindows.co.uk



This year's acorns are already beginning to sprout. They only need a modest amount of moisture and some thin forest soil to grow, but many are crushed on the forest tracks or shrivel on rocky outcrops ('some fell on stony ground'). Others are taken by Grey Squirrels and eaten at once or buried for later consumption with their tips nibbled out to prevent germination. The loud Jays are busy burying too, unwittingly acting as woodland planters in return for a small percentage of acorns retrieved.

The baby oaks will come up thick and fast under those trees which have produced a good crop of seed but will have to escape the attentions of other hungry nibblers in order to reach maturity. The Fallow Deer browse seedlings and any branches within reach, and Rabbits may strip off bark in the hungry months of winter. Not so obvious are the hordes of insects such as moth and fly caterpillars, weevils, leaf miners and gall wasps which shred and tunnel their way through the foliage but don't usually cause a tree to die. Oaks are slow-growing compared to conifers and there is a useful rule of thumb which says that they put on an inch of girth (measured at breast height) on average for every year of their lives.



This brings me to my main subject, which is 'Why are so many oaks in the forest dying?' You may have noticed leaves yellowing, branches dying back and whole trees dying in the space of a few years. Chronic Oak Decline (COD) has probably been around for a century and, like Acute Oak Decline (AOD), may result in the death of a tree due to a combination of factors. Some trees die four to six years after the onset of symptoms while others seem to be checked for a few years but then continue to grow. The acute form (AOD) was first observed about 30 years ago but has been spreading rapidly in recent years, affecting our native pedunculate and sessile oaks and their hybrids (which account for most of the Wyre oaks).

As the photo shows, the trunks of affected trees can often show lesions oozing black, resinous liquid. There are at least 3 species of bacteria present in the fluid and involvement of some sort by the native Oak jewel beetle, *Agrilus biguttatus*, whose larvae tunnel galleries under the bark of affected trees and leave characteristic D-shaped holes in the bark when they exit as adults. Heat, drought, fungal growth and damage to trunks and roots by woodland operations may all play a part.

What can be done about it? Nobody knows yet, but Sandra Denman of Forest Research (part of the Forestry Commission) and several academic bodies are working on it and we all hope that our oak woodland will be safe for generations to come.

Linda Iles

BILL'S QUALITY METALWORK
5 GREENFIELD ROAD, CRAVEN ARMS, SY7 9QU
Manufacturing Made to Measure Gates and Railings
~Balconies and Staircases, Handrails, Carports,
Structural Steelwork and Mobile Welding Service.
Phone Bill on 07973 248 016 or 01588 673 914
Office for a free quote



Heath Farm Meats, Bagginswood

Opening Hours

Wed 8am to 5.30pm, Thurs 8am to 7pm, Fri 8am to 5.30pm, Sat 8am to 12.30pm

Straight from Our Farm to Table

We rear & sell all our own beef, pork, lamb & mutton through our shop on farm. We also make our own flavoured sausages, burgers, home cured bacon, gammon etc. No order to large or small.

Hams ● All Poultry ● Honey ● Mawley Milk & Cream ● Ashley's Cakes & Bread ● Jams ● Eggs ● Cheeses ● Apple Juice ● Potatoes ● Meat Pies ● Sticks & Logs

Telephone 01746 718732 with your order to arrange a date & time for collection

No.19
The Beauty Room
 with Jane Weaver



Wash away the aches, pains and stress of everyday life by indulging in a relaxing Swedish massage, any combination of back, shoulder, neck, arms and legs, ½, ¾, 1 or 1½ hrs, or treat yourself to a manicure/pedicure, waxing or tinting.

Telephone consultations available to discuss any personal requirements, treatments available at No.19 or in your own home. Contact Jane on 07968 582269 or email 19thebeautyroom@gmail.com

Just like the lotus flower we too have the ability to rise from the mud, bloom out of the darkness and radiate into the world!




Soft furnishing and
 Interior Design Services

Masquerade
 Fabrics Limited

01299 271 680

36 High Street Cleobury Mortimer near Kidderminster
 Worcestershire DY14 8DQ

**Retailers for Sanderson, Harlequin, Monkwell
 Crowson and many more...**

Comprehensive design, measuring and fitting service.



FOR ALL YOUR ACCOUNTANCY REQUIREMENTS

www.fairway-accountants.co.uk

Head Office: 01299 822283
team@fairway-net.co.uk

Simon Hector: 07896 439594
sjh@fairway-net.co.uk



Philip Dunne's Letter from Westminster

As the days grow shorter and colder, we approach winter and can expect morning frosts and later sunrises. We are all concerned by the higher cost of our energy bills, as the global crisis caused by President Putin's unprovoked invasion of Ukraine impacts us here in Shropshire.

While Putin may be on the backfoot, it may also be a long time before the global energy market stabilises again. Our resolve in supporting Ukraine must hold. But we also have to manage higher costs for now. The new Prime Minister Liz Truss has acted swiftly and decisively to help households and businesses through this challenging period.

This builds on the introduction announced in March of a £400 reduction in electricity bills for all, a non-repayable £150 cash rebate for homes in Council Tax bands A-D, equivalent to 80% of households, and £144 million of discretionary funding for local authorities.

I have been urging Ministers to make support available for those off the gas grid reliant on alternative energy sources, including domestic heating oil, many of whom live in remote rural areas, as well as those whose fuel bills are paid by others, such as those in park homes in rural Shropshire.

The Chancellor made explicit in his September fiscal statement that households reliant on alternative energy sources would benefit from the £400 of universal support available and announced a further £100 for those using alternative energy sources, to be paid through discounts on electricity bills from 1st October. At the time of writing, Ministers are developing appropriate provisions for landlords to pass on discounts to tenants paying all-inclusive bills.

But the Government knows we need to go further. The Prime Minister introduced an Energy Price Guarantee (EPG) from 1st October to give households certainty with their bills. The EPG will cap the unit cost for gas and electricity charged by suppliers.

This guarantee will mean typical three-bedroom households will pay no more than £2,500 per year. This will save the average household £1,000 a year compared with forecast increases in energy costs this coming winter.

Energy cost rates for businesses have been capped for six months. In the medium term, it is vital that we create a sustainable domestic energy supply through the expansion of renewables (which successive Conservative Governments have increased from 6.5% of electricity generation in 2010 to nearly 43% in 2020) and new nuclear. The Government remains committed to the 2050 net zero target, but this assumes we will continue to rely on fossil fuels for 15% of our electricity generation in 2050, so we need to maintain some domestic production to ensure sustainable supply.

Finally, we must work to improve the energy efficiency of our buildings which generate 30% of UK emissions. Over 40% of homes now meet EPC Standards A-C, an increase from around 10% in 2010. Several energy efficiency schemes have had funding boosts: the three-year Boiler Upgrade Scheme offering grants of up to £5,000 for low-carbon heating systems; the Home Upgrade Grant Scheme which funds energy efficiency measures for low-income households operated under the ECO programme which received a £800 million boost last month; and the Social Housing Decarbonisation Fund which is helping to upgrade social housing stock to EPC rating C which received £950 million more last month as well.

Over £6 billion has been committed to retrofit schemes over this Parliament and VAT has been cut on materials such as solar panels, heating pumps and roof insulation for five years. Much has been done, though there is also much to do.

Philip Dunne

Do you suffer from heat loss, outside noise or draughty windows like many older properties?

**Bespoke
Secondary
Glazing**

Secondary glazing from Lansec greatly reduces draughts and heat loss while retaining the traditional appearance of your original windows

- **Recommended** by Historic England for heritage and Grade 2 listed buildings
- **Barely visible** from inside or outside
- **Colour matched** to your existing windows
- **10 year** material and labour guarantee
- **Local**, family run business



01299 544013
lansecglz.co.uk

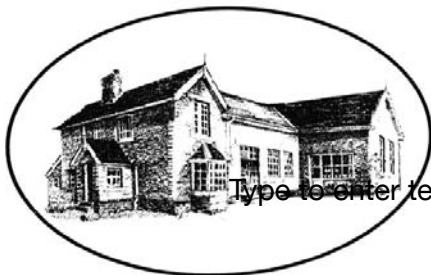
Unit 4 Blackmanstitch, Long Bank, Bewdley, Worcs DY12 2QW



LANSEC

Bayton Church of England Primary School

- Be the best you can be, as a child of God -



Type to enter text

www.baytonceprimary.co.uk
01299 832393
office@baytonpri.worcs.sch.uk

Call or email to book an appointment to visit our school and meet our staff.

"We offer an alternative and unique Primary School experience, in an idyllic rural setting. A small family-orientated school with a caring ethos and traditional values, coupled with excellent results. If you want the very best for your child, come and visit us."

*Ms. Jolanda Simmonds
Head Teacher*

**Spaces currently in Years 4, 5 & 6, and we are also welcoming Parents & Carers of September 2019 intake.
Governor vacancies – please call for information**

Rated "Outstanding" in our latest SIAMs inspection (March 2018).

Friendship – Hope – Perseverance – Compassion – Trust – Forgiveness – Responsibility – Respect – Truthfulness

Our school vision: We aim for everyone to be a part of our community, be life-long learners who are confident, enthusiastic, valued and reach their God given full potential.



MORE FOOTPATH NEWS

CMFA Social Walks Report

The Social walks programme for 2022 consisted of nine walks and a five day holiday in April.

Once again thanks go to all the walk leaders for their assistance in arranging a varied programme. The walks averaged 6.5 miles in length and either ended with a picnic, barbecue or pub lunch. The average attendance was 14 which is slightly less than pre Covid numbers, but still a good turnout.

Whilst we are very pleased to have a well established group of social walkers, new participants are always very welcome.

In April, 18 members went to Bournemouth for a most enjoyable five day break organised by Paul and Hazel Jennings. Members tackled a good variety of walks depending on the degree of 'café culture' or 'sea front culture' preferred. All the walks were made from the hotel with the help of the excellent local bus services and, of course, bus passes. The Hotel Collingwood also did a great job. At the end of the walks, there were frequent visits to Wetherspoons where the drinks were great value as normal.

In May, Judy and John Sant organised a successful barbecue which was very much appreciated.. It was very nice, once again, to see Val and Graham Simpson were able to join us at several of the lunches and we very much

hope this will continue for 2023. Non walkers are always very welcome to attend the lunches.

The 2023 program will be planned after the November walk and we hope that finding leaders will be as easy as last year. We look forward to another year's adventures.

Paul and Hazel Jennings

CLEOBURY ROYAL BRITISH LEGION

A quiet year following the lifting of COVID restrictions, although our monthly meetings have gone ahead as usual. We managed one outing – to the Violette Szabo Day.

The Harvest Auction was very successful this year. The total raised is £1963.00 which is a record. Many thanks to all of you who donated items for the auction, donations of cash and of course, those of you who bid and bought items.

For our next outing we are planning a half day trip to the Land of Lost Content in Craven Arms on November. 24th. A Million Memories from the 20th Century! Britain's foremost collection of pop culture ephemera, obscure and ordinary objects from the pre-digital era. Closing down next year so this is a last chance for a visit. Cost for coach trip and entrance fee in the region of £20.00 depending on numbers.

The Branch is in need of members, with a reducing membership and the age of those remaining increasing. You don't have to have served in the military and you can all play a part. Branch meetings are in the Sports & Social Club

on the 2nd Wednesday of the month at 7.00pm.

The Royal British Legion has started an initiative to help the Service Community who may be having difficulty.

You can find out more about the Royal British Legion and membership at <https://www.britishlegion.org.uk>. You can contact me on 01299 271384 or email mike.hermolle@btinternet.com.

The Branch will be taking part in Remembrance activities which are the Armistice Day Silence at the War Memorial on 11 November at 1100 and of course the parade on Remembrance Sunday

Mike Hermolle

Branch Chairman

LUDLOW'S TREE OF LIGHT

Ludlow Rotary Club's Tree of Light is back this year, located in the Castle Gardens on Castle Square. A lovely idea, it's a chance to make a dedication to a loved one or special memory. Donations are £5, which go to Ludlow Rotary Cares. Over the last seven years the Rotary Club has invested over £30,000 in local community projects.

You can donate by picking up a form at St Laurence's church in Ludlow, or from estate agents Nock Deighton. Or you can download a form www.ludlowrotaryclub.org.uk or go online at www.goldengiving.com/wall/ludlow-rotary-club.

The lights will be on from November 26th until January 5th.



The Lamp Restaurant

15a High Street, Cleobury Mortimer, Shropshire, DY14 8DG

01299 272785 or 01299 271313

Fully Licenced and Air Conditioned

Serving Bangladeshi & Indian Cuisine



The Lamp Restaurant winner of Currylife award chef of the Year

Open 7 days a week from 6.00pm until 11.00pm

The Lamp's cuisine, inspired by Sylhet, the second city of Bangladesh, offers a wide variety of choice along with established favourite dishes and a selection of Chef's Specials.

The wide variety of starters and accompaniments chosen by our chef to complement your main course.

Takeaway service offers free delivery up to 3 miles for orders over £15.00.

Find us on Facebook: Lamp Inn Cleobury Mortimer



Michael Coombes Roofing & Building Maintenance.

Complete Re-roofing, Roof repairs, Pointing & Chimney repairs.

Slabbing & Brick work

Wall & Floor Tiling

Painting & Decorating

Over 20 Years experience in the Cleobury area.

Call Michael on 07854 047413

Happy Harman Free Range Turkeys

Orders now being taken for Christmas

Keep it local

Anthony Harman

07779239393 or 01746 718945



The Manor House

First of all we welcome new subscribers to our newsletter, many of whom signed up at the September Farmers Market in Cleobury. It is encouraging that so many residents of the town and immediate area are showing their support for this cause, unlike our County Council.

In the last news, reference was made to the business at 15b High Street adjacent to the Manor House. The editor apologises unreservedly to Mr Topham of Hollywood Fencing for pre-empting a change in the use of the property and not permitting Mr Topham the opportunity to inform his customer base of impending changes. A significant portion of the land which was considerably overgrown appears to have now been tidied up by the land owner. Any information on the future use of this important land at the side of the Manor House is not in the public domain at this stage.

One of the people who attended the Farmers Market brought in a wonderful document which was in the form of a school project written and compiled by Laura Key while a student at Lacon Childe School. The project included more detailed background to the prior ownership of the Manor House up to the point that it ceased to be a working Nursing Home. A few photo's of the inside of the house include the entrance hall with the Grand Curved Oak staircase and the Marble fireplace which was imported from elsewhere in the region. The staircase is believed to be the special feature which gives the house its Grade II* rating. From the picture which is quite old, it is clearly quite a spectacular sight. Other images show a typical residents bedroom and a tea room. We have permission to use these images with credit to Laura Key in the Manor House web site www.themanorhouse.info

Attached to this project from Laura was a marketing brochure for prospective residents detailing the services and accommodation available. It is not known if this was produced by the current owners or a previous care company. In any event it gives a wonderful insight to the past history and use of the house which adds significantly to our collective desire to see the house restored and put back into use in whatever form it eventually takes. It certainly does not justify or support any reason or causes for the house to remain in its apparent decaying state.

This is the primary objective of Save The Manor House group and with your support we will continue to promote the cause for as long as it takes.

Raising awareness and engaging with local and county officials has been a factor in our activity and we recently met with Philip Dunne MP for Ludlow. Mr Dunne has been and I am sure will continue to be very supportive and has been in communication with the Chief Executive of Shropshire Council Mr Andy Begley. In a response on behalf of Mr Begley it was stated and I quote

“The Council’s Historic Environment Team continues to monitor the condition of this building on a regular basis. Whilst it is acknowledged that the frontage of the property is periodically overgrown and the condition of the external paintwork is deteriorating, the building remains secure, windproof and weather tight. Unfortunately, in these circumstances the planning enforcement powers available to the Council cannot be used. The Conservation Officer is in contact with the owner and he continues to state that he intends to bring a scheme forwards for the property. He is also aware of the concerns of local residents. Given the Grade II* status of the property, the Team will however contact the Heritage at Risk Team at Historic England to see if there is any further assistance they could provide.”

While we appreciate that our local MP is involved, the above response is frankly not acceptable nor we believe entirely accurate. Making the assumption that the building is secure, wind proof and weathertight, is only based on an image of the front of the building and does not include the references made to them by a highly experienced and qualified Chartered Surveyor who has seen the rear of the property for himself over a year ago. A proposal to obtain photographic evidence, to support our belief that the rear of the building is in serious trouble, will be resolved in due course and at that point further approach will be made to the Conservation Officer and copied to the current owner.

The Manor House Team



Purrfect Cattery

Comfortable and spacious pens for single or double occupancy
fully licenced by Shropshire Council

visit our website: www.purrfectcattery.co.uk

Contact us on: 01299 270565 or mobile: 07968 111415

Or email: enquiries@purrfectcattery.co.uk

TIRED OF THE SAME OLD BEER?

We've all been there, you've just got home and there is no beer in the fridge. You contemplate popping to the nearest shop* and then you remember all they stock is Fosters, Carlsberg and some manky looking white cider that hasn't even seen an apple.

Don't worry, we are here for you!

The UK's freshest craft beer subscription service is now live, delivering amazing beer from the UK's best independent breweries to your door. You can choose to join the club and get a case of hand selected beers once a month or just buy the one case as a one-off.

BECAUSE Life is too short for Sh*t Beer

*Please note this is not implying any of your local shops have a poor range of beer. Its is a generic statement used for marketing purposes. I imagine your shop probably has nice beer.



Take your fancy smart phone out and scan this QR code. The magic of the internet will unfold right in front of your eyes. Here you can register for more updates, discount codes and ace competitions.



**ALL CHANGE AT
CLEOBURY RUGBY
FOOTBALL CLUB**

Founded in 1991, Cleobury's greatest achievement to date was being the first Shropshire club to play at Twickenham. That was in the junior rank finals of a national competition, when they lost out to Dorking, who had a history of more than 100 years. We have a club we can be very proud of. JR

Chair – After a long association with the Club, helping to set it up in 1991, later performing a number of roles, I am standing down as Chair after 14 seasons. Intending to remain involved, but ultimately retiring to the 'back-benches' to cheer the team on from the side-lines. I have thoroughly enjoyed my tenure as Chair and eagerly look forward to helping the transition to the new group of people.

New Chair – Tim Wright becomes just the 4th Chair after Dan Bills (three seasons) and Roy Powell (14 seasons) and is relishing the new role and opportunity. Having served the Club in several roles over the years, Tim is ready for the new challenge.

President – Since 2009 this vital role is for a three-year

term of office and having completed this commitment for three seasons (four years due to the inactivity in Covid 2020) Pete Howman now stands down with the grateful thanks of the Club and the Committee.

New President – Adrian Robinson from Mawley Town Farm, a stalwart of the pack during the early seasons and for many years a great supporter of the Club with a Pitch Board advertising including the famous slogan 'the pint that doesn't give a hangover', has agreed to serve a three year term and is looking forward to getting more involved.

Coach – After a change of job hours and lack of time available David Howard has stood down in this position. The Club thanks him for his efforts over the past four years and three seasons which included the Covid inactivity of 2020. We hope Dave retains an affinity and involvement with the Club when his work and family commitments allow.

New Coach – Will Giddings has now agreed to take the Club forward and as with any new Coach, there is a new positivity. The players are embarking on a new season with some

confidence, with lots of new young players coming forward. There is a renewed enthusiasm to fitness, to training and a game plan, we just need more existing players to return to training and playing.

Captain – after four years and three seasons (including the Covid inactivity of 2020) our longest serving skipper has decided to take more of a back seat. We thank him for the excellent job he did in the role and hope that he can play with some freedom of responsibility.

New Captain – Matt Rose has been playing at the Club for a couple of seasons and has agreed to step up to this leadership role. Starting his playing career at Old Luctonians and now working locally, he and his family are enjoying life in the town and he is embracing the job.

Dave Hinves

CMRFC fixtures for November:

Saturday 5th: Playing at home to Harborne.

Saturday 12th: Playing away at Bridgnorth.

Saturday 26th: Playing away at Market Drayton.



Doddington Lodge Christmas Event

Join us for Father Christmas & his elves switching on the lights!

Thursday 1st December 2022
at 4:30 pm

Santas Grotto, Craft Stalls,
Local Church Choir.
Food & Drink available.

www.doddingtonlodge.com | reception@doddingtonlodge.com
Doddington Lodge, Doddington, Nr Cleobury Mortimer Shropshire DY14 0HJ



OPERATION CHRISTMAS CHILD SHOE BOX APPEAL



Collection will be 14th November 2022



Doddington Lodge is supporting this very important appeal and is your local shoe box drop-off location. We look forward to seeing you with all your boxes, filled preferably, but if anyone has any empty shoe boxes that they don't want please bring them along and we will fill them on your behalf.

Thank you for your support!

National Collection will be week of the
14th November 2022



www.doddingtonlodge.com | E: enquiries@doddingtonlodge.com | T: 01584 707084



Doddington Lodge

Residential Care Home

Living with us at Doddington Lodge

Care and Warmth at its Heart

We would like to welcome you and your family to Doddington Lodge, our newly renovated, privately owned residential and dementia care home in this historic, tranquil hamlet of Doddington, Nr Cleobury Mortimer. Located on the beautiful Shropshire & Shropshire boarder, providing picturesque views from every aspect of our home.

Our home features a modern bistro dining room and bar with a delicious daily menu created by our accomplished chefs. Individually designed spacious double rooms, perfect for couples to stay together or beautiful single rooms all with en-suites and stunning countryside views. Even a hairdressing salon for a little pampering to provide a place of well-being.

Doddington Lodge is a place where friendships are made and special moments are shared. We organise many fun activities that everyone can get involved with, whether that's a sing along, arts and crafts, collecting fresh veg from the allotment or just simply helping each other with a crossword in our daily newspaper. Each day is different, we certainly have many happy moments...

Our home is a loving community and family, where you can consider Doddington Lodge a home away from home. We will provide you with all the key information, guiding you through every step of the process, whether you are staying with us for a short or long stay.



Royal Ascot Ladies Day comes to Doddington Lodge



A very special visit from DML Racing, Worcester



"There is such a lovely atmosphere & many friendships made. Every step is taken to make each day enjoyable and for everyone to get involved with the activities."



"I began working at Doddington Lodge over two years ago & what an amazing place to work, a beautiful home with great carers and management, lots of investment has gone into making it into such a wonderful place. Doddington is like my family and I will be forever grateful for having an opportunity to work here x."
Georgie - Deputy Manager

Join our team and make a real difference...

Becoming part of the Doddington Lodge family is really something special. Our team is built on a shared purpose, to provide outstanding care for our residents and support for loved ones. We invest in our team members, helping them progress and develop within their roles and career path. More than ever we are looking for the right individuals who can really make a difference. If you believe you have the right skills please email your CV to: enquiries@doddingtonlodge.com or visit www.doddingtonlodge.co.uk/careers.

Current Vacancies

- NIGHT CARERS
- DAY CARERS
- Part Time -

To apply please send your CV to enquiries@doddingtonlodge.com

www.doddingtonlodge.com | E: enquiries@doddingtonlodge.com | T: 01584 707084

Doddington Lodge, Residential Care Home, Doddington, Nr Cleobury Mortimer, Shropshire DY14 0HJ.



Remember to follow us

CARTER'S ANTIQUES



We are looking to purchase all manner of antiques, jewellery, coins, medals and curiosities.

For a free valuations kindly telephone
John Carter: 07779 311792
 Or email: johnbarney743@gmail.com

SINGING LESSONS

Professional singer and experienced teacher recently moved to this area
 Vacancies available

All styles, ages, standards welcome
 Contact Angela Kazimierczuk on
 07870 506655



Natalie Taylor Dip CFHP MPS Pract.

Specialist Foot Health Practitioner

Specialising in:-

- In-growing toenails
- Fungal infections
- Nail trimming
- Verrucae
- Calluses
- Corns

All from the comfort of your own home.

If you would like to make an appointment, please call on **07779 113982** or **01584 890112**



COUNTRY SKILLS

CPCS/NPTC Approved—fully insured

- Outside Renovation
- Tree Surgery, Hard Landscaping
- Slabbing and Fencing
- Decking, Roofing
- Contract Mowing

Call for a free quotation

R. Price & Sons

Mobile: 07967 140720 Email: roger@country-skills.co.uk

Painter/Decorator Christine Smith

Friendly, local, female professional. Any job considered: including Indoor/outdoor, walls, windows and doors, wallpaper & preparation. DBS checked. Fairly priced. Free quotes.

Call: 07977296335

E: clsartcontact@gmail.com



Precious Memories

Funeral Celebrant - Carole Clayton

07971 543790— 01584 890007

South Shropshire - North Herefordshire - North Worcestershire

Celebrant@preciousmemoriescelebrant.net

www.preciousmemoriescelebrant.net

FB: @preciousmemoriescelebrant

Everyone has a story to tell—I'd be honoured to be the one to tell the story of your Loved One.

Claire Bradley
Floral Designs

Florist for all occasions, specialising in wedding and funeral flowers

Winner of the Matrimony Award 2020 Best Wedding Florist
 Nominated for 2021 Matrimony Awards

Christmas workshops available

Email: clairebradley1@icloud.com
 01299 270415 or 07980 580770



Domestic oil-fired boiler breakdown & maintenance services.

27 years' field-service experience with leading UK boiler manufacturer Worcester Bosch.

Donovan Taylor

Tel: 01299 828670 or 07807 837040

donovan.taylor@sky.com

www.greenstar-boiler-repairs.com

Caring about your environment and providing an honest, professional & reliable service you can trust



A small local business.

I am a qualified lawyer with over 30 years experience offering a personal and approachable service.

I undertake specialist will drafting, lasting powers of attorney, deputyship applications and probate.

"I've used Mandy at Westons Wills and Probate numerous times over recent years covering all aspects of her expertise. Her guidance on the way forward and solutions to issues that she has suggested has been excellent. She is extremely communicative and responsive, and handles difficult situations with compassion and empathy. I have happily and confidently recommended her services to everyone I know that would benefit from her services."

"Mandy Weston of Westons Wills and Probate is a very professional and knowledgeable person. She has now become my 'go to' legal adviser and has taken on many legal tasks for me and my family. Wills, Probate, Inheritance Tax and Powers of Attorney. I trust her judgement and experience to act in mine and my family's best interest. I would highly recommend her legal services to anyone."



Contact me today

"Great expertise and a friendly professional manner"



Contact Mandy Weston Phone 01299 405873 Mobile 07931 411733

Email mandy@westonswillsandprobate.co.uk **Website** www.westonswillsandprobate.co.uk

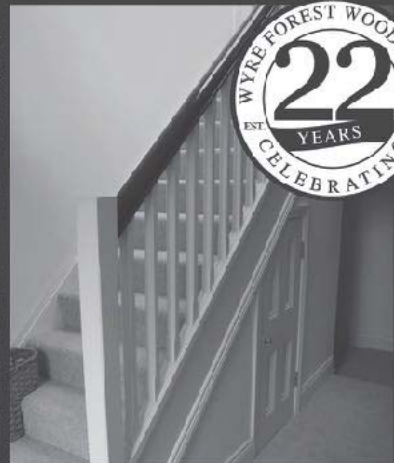
Address The Old Snuff Mill Warehouse, Park Lane, Bewdley, Worcestershire DY12 2EL



**WYRE FOREST
WOODCRAFT**
purpose made joinery

**Specialists in the Manufacture
of Purpose Made Joinery**

- Tailor Made Timber Windows
- Traditional and Contemporary Style Timber Doors
- Custom Made Staircases
- Bespoke Conservatories
- Made to Measure Gates




TO SEE EXAMPLES OF OUR FULLY FACTORY FINISHED JOINERY VISIT OUR WORKSHOPS AND SHOWROOM

www.wyreforestwoodcraft.co.uk

01562 68100 | enquiry@wyreforestwoodcraft.co.uk

Oldington Lane | Firs Ind Est | Kidderminster | Worcestershire | DY11 7QN

IRENA S.A.C DIP. (DIST). N.C.F.E. M.C.F.H.P.
FOOT HEALTH CARE PRACTITIONER




All your foot problems dealt with:-

- Foot health check • Verrucas etc.
- Corns • Medical Manicure
- Callus • Medical Pedicure

Free vascular Doppler Check of your feet

The Old Farmhouse
Button Bridge, nr Bewdley
DY12 3AW



Mobile visits available
01299 841 277
hessins@gmail.com

Paul Harding  **Tree Services**

- Tree surgery and felling
- Woodland thinning & maintenance
- Hedge trimming & grass cutting
- Supplier of hardwood logs, kindling and garden bark

•NPTC certified fully insured. Domestic and commercial work undertaken.
Tel 01584 890 993 Mob 07970 878 224

Hollywaste Holiday Lets

Our 2 bedroom (ensuite) cottage, sleeps up to 6 adults, situated in Hollywaste, Cleobury Mortimer. Fully equipped kitchen, open plan living room with log burner, dining area and downstairs WC. Includes Freesat and fast WiFi. There are enclosed & open decking areas outside, to take advantage of the beautiful countryside views, and a grassed area for outdoor games. Open all year round and welcomes adults, children, 1 large dog or up to 2 small dogs

Discount of 10% available for locals simply quote "keepitlocal" at the checkout

Events we can accommodate:
Staycations, Pamper weekends, Shooting weekends, Wedding venue, Minimoon stays, Stargazing weekends, Cookery weekends & events, Camping and caravan pitches are also available!
If you're interested in hiring our space or land for any event and time frame.

Tel: 07962 151322 Email: hollywasteholidaylets@gmail.com FB: <https://www.facebook.com/HollywasteHolidayCottage>
Website: <https://hollywasteholidaylets.squarespace.com> for more information

 **Kingfisher Crafts**
Sally Serrell-Cooke
07890 721657 | kingfishercrafts299@gmail.com
Visit me on Etsy and Instagram: **KingfisherCrafts299**



New Baby Hampers (Travel Changing Mat, Bibs, Nursing Towels, Quillow) *
Placemat Sets * Wine Gift Bags *
Cafetiere Jackets * Festive Gifts

**JENNY'S MEMORIAL
TRIBUTE**

Andy and Jenny Vanderhook moved to this area some 40 years ago, settling into the Old Forge in Neen Savage. He travelled into the industrial West Midlands every day, working in the oil industry, while Jenny applied the skills learned running her family's apple farm to their new home. They both had a deep affection for country life, reflected in the two greenhouses with flower and vegetable gardens. Andy was renowned for the local honey he offered through local shops and they worked with Mother Nature to develop the wildflower meadow that was such a colourful background to their home.

It was Jenny who persuaded the Horticultural Society to pleach the lime trees on our High Street, having seen the effects on a visit to Bruges. Not an immediate success, because it was an unusual treatment, but now they are a noted feature that is much admired.

Jenny is best known for her devoted work in collecting and preparing the annual Shoe Box Appeal to take 1,000 boxes as gifts to the children in poorer

countries in eastern Europe. She would talk about her visits there and the wide-eyed delight of children who had never been given a gift before, so poor were their families. Less well known was the amount she spent from her own pocket in helping to fill those boxes with simple gifts and basic educational aids like notepads and pencils. Five times she travelled out with the lorryload of gifts, always full of enthusiasm for the simple good the work of she and her many helpers did.

She's travelled a great deal, including a trek to Nepal with the Eddies Davis family's 'Live the Adventure' group, when they painted the new school they'd had rebuilt following the dreadful earthquake there, a stunning setting within sight of Mount Everest.

She's also been to Northern Uganda to help the Nurses Reaching Out charity by painting the hospital at Gulu and gave out meals to those who in turn helped them, the only meal those people had that day. She is visibly moved when talking about these journeys and seeing how little many people in this world

have to simply eat. Her compassion shines through.



When Andy died in June this year, Jenny decided to sell The Old Forge and move to be near her daughter and family in Hampshire. She will leave with 40 years of happy memories to treasure, but leaves a long term reminder of this family and the part they've played in helping others. Outside the Parish Hall is a new seat, made by James Barrett of Little Detton using steel, which will require very little maintenance compared with the more usual wood for such memorials. It's been the Vanderhook way during their time here and travelling to help others - building memories to last a long time.

Sorry to hear that Jenny of Shoe Box fame is pottering off to Hampshire. She will be missed. So I will be doing the Shoe Boxes for the foreseeable future. There's no way I can match Jenny, but I will try. My contact number: 07976 307 889. KEITH BALMER

MORE ABOUT SHOE BOXES
For Boys and Girls:
Toothbrush & toothpaste, hair accessories/brush, soap & face cloth, stationery & paper, gloves, hat & scarf, new socks/underwear, a soft toy, game, puzzle, small musical instruments, toy vehicles, small ball, sweets (use by date from June), a photo and message from yourself.



CARDS, GIFTS, HOMEWARE, HARDWARE AND EVERYDAY ESSENTIALS!

Friendly Staff, and a great range of stock with prices to match!

If you need it, and you want it! We've probably got it!

Pop inside before you pop online!

18 High Street, Cleobury Mortimer

Tel: 01299 489590

Email: cleoburrs.onthehighstreet@gmail.com

Like our Facebook page CLEOBURRS

Keep up to date with the latest products!



GW

Tree Stump Removal

Commercial and residential.

Fully insured, qualified and professional.

Your property left neat and tidy.

Happy to give quotes with no obligation.

Ring Sam: 07787095668 or 01299832549

Email: sam@gwstumpremoval.co.uk

Rachel Siddall

DipCFHP, MPSPract

Footcare in the privacy of your own

home:

Nail trimming
Ingrowing toenails
Corn removal
Thickening nails
Callus reduction
Verruca treatment
Diabetic foot care



07478 007913



Hobbs Building Services

EST 25Years.

A Total Plastering, Maintenance and Building Service for your home,
business and outbuildings.

Insurance work undertaken

Emergency call out service for general plumbing, roofing, boarding up damaged doors and
windows. For a free quote please call;

Ian on; 07967190742

Email: hobbsbuildingservice@yahoo.co.uk Or Call/Text Kelly on; 07790085307



Cleobury Mortimer Benefice Church services throughout the Benefice in November

St Mary's Cleobury Mortimer

Sunday 6th November – 10.00am Family Service
Sunday 13th November- 10.00am Remembrance Service
Sunday 20th November– 10.00am Eucharist
Sunday 27th – 10.00am Eucharist

St John the Baptist, Doddington

Sunday 6th November – 11.00am Eucharist
Sunday 13th November – 10.55 Remembrance Service at the War Memorial

St Michael and All Angels', Hopton Wafers

Sunday 6th November – 9.30am Eucharist
Sunday 13th November – 10.00am Remembrance Service

St John the Baptist, Kinlet

Sunday 13th November – 10.40am Remembrance Service
Sunday 27th November – 6.00pm Evening Prayer BCP

St George's, Milson

Sunday 6th November – 6.00pm Evening Prayer
Sunday 13th November – 10.50am Remembrance Service
Sunday 27th November – 9.00am Eucharist

St Mary's, Neen Savage

Sunday 6th November – 6.00pm Evening Prayer
Sunday 13th November – 10.50am Remembrance Service

All Saints', Neen Sollars

Sunday 6th November – 11.00am Village Worship
Sunday 13th November – 10.50am Remembrance
Sunday 20th November - 11.00am Eucharist
Sunday 27th November – 11.00am Village Worship



'Drop in at St Mary's' - every Thursday, 10.00-11.30am

- for coffee and a chat, if you are feeling lonely and confused, have lost the confidence to go out or have no-one to talk to. If you have problems and are struggling to sort them out or just wish to have a quiet place to sit. This opportunity is free and provides a peaceful environment to sit in the company of others and listen and talk if you wish to.

The Church Office is open Tuesday and Thursday from 9.00am-3.00pm
Contact details: Grace Johnson cleoburychurch@hotmail.com
Tel: 01299 272916

Cleobury Opticians

NHS & private eye tests ♦ FREE children's glasses

FREE NHS glasses ♦ Home visits



Opening Times-	
Tuesday	9am-1pm 2pm-5pm
Wednesday	9am-1pm 2pm-5pm
Thursday	9am-1pm 2pm-5pm
Friday	10am-2pm
Saturday	9am-1pm

www.cleoburopticians.co.uk

16 Church Street, Cleobury Mortimer, Kidderminster
DY14 8BX

Tel: **01299 270012**

Email: cleoburopticians@outlook.com



All Aspects of carpentry work undertaken

Level 3 City & Guilds in Carpentry & Joinery, 20 years of experience

Tel: **07854 032750**

Email: duncpearce1@gmail.com

Stewart Mumford Architectural Services Bespoke Architecture

Great value personal service backed up with extensive local knowledge, established links with other construction professionals to ensure comprehensive packages specifically tailored to individual needs.

Initial consultation free of charge.

Specialist in Works to Listed Buildings, Affordable Houses, Open Market Houses, House Extension and Alteration, Barn Conversion and Commercial Projects.



T: 01299 271068

M: 07977 921039

E: office@stewartmumford.co.uk

Simon Morton

Minion Invasion

It would seem that we're under attack.

OK. That might be a tad dramatic, but we're most definitely under siege. Every evening as the light begins to fade, they arrive. They huddle up in little groups around my car, making a hell of a racket and throwing suspicious glances our way, eyes disguised with fancy little black masks.

And when they're not making a noise, they're having a whale of a time jumping out from corners when I'm least expecting it, ferreting around my pots for hours on end and, frankly, crapping everywhere.

Our captors, as you may have guessed, are partridges. Hundreds of the bloody things. And it would seem that there's not a vast amount we can do about it.

We've had the joy of living in the area for almost a decade, yet this is the first year they have decided that the Morton home is 'Partridge Party Central' when the lights go down. A typical evening goes as follows:

Mid-afternoon - They start to gather on and around a large pile of wood we have just outside the house. I get the distinct impression this is the equivalent of them bumping into each other at the end of a busy day and deciding that a quick pint and chinwag isn't going to hurt.

Late afternoon - The 'quick pint' has turned into a heaving mass of mates, all of whom seem to be in the same pub and desperate to buy the next round. A fair proportion of them will take to running around the driveway in a swarm of over-excited brown feathers. There's no apparent reason for this - it looks like they're merely celebrating the joy of being born a partridge. It would appear that bonhomie is very high on the partridge characteristic scale. It's this manic energy that gives them the look of Minions from the film 'Despicable Me' - it's all chaos, noise and befuddled amusement.

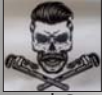
Early evening - Things got up a couple of notches. It's now time for them to gather on our roof and partake in the fun game 'ripping moss and stomping up and down on the roof tiles'. It's at this point I Google 'ASBO for partridges' and draw a blank. Instead, we listen to roof tiles slipping under the clumsy feet of our Minion friends.

Late evening - They run out of steam and fall asleep. Naturally, the crapping continues throughout the evening. As a side note, their poos are a funny two-tone affair. Not seen anything like it before (and, trust me, I've cleared up after a LOT of animals and birds). Strange.

The following morning - Peace returns to the Morton household. Briefly. I'm not too sure how long this daily routine will continue, but they *do* belong to the local shoot, so I guess the grim answer is hidden somewhere in that statement. While they are a messy and noisy lot, I will miss them when the inevitable happens.

PS - Yes, we do have a pear tree, but alas, there hasn't been any singing to date. It's almost as if they want to spite me.

Simon Morton



A M Plumbing & Heating

- *General plumbing
- *Bathrooms
- *Hot water cylinders
- *Central heating
- *Oftec approved
- *Oil boilers
- *Servicing
- *Power flushing

Call Today: 07565 181554

CLEOBURY CARPENTER

New to the area – Est since 2006

All Aspects Of Carpentry & Joinery

Your Local 'Handy Man'

No Job Too Big Or Small

Contact Joe - 07752 463 651

hurleyhomesltd@outlook.com

Quality firewood for sale

We source our wood from a reputable and sustainable source.

Can deliver up to 20 mile radius from Bayton (DY14 9NA).

We can do multiple and large loads.

Please call to enquire on pricing.

John Edwards 07531025018



H.C.P.C Number CH22527

Cleobury Chiropody Janet Manley

Qualified Chiropodist
MSSCh. MBChA
BSYA (reflex) REIKI Master

Tele:- 01299-272841

Mob:- 07805-268439

Email: janetpmanley@yahoo.co.uk

2, Tenbury Road,
Cleobury Mortimer,
Kidderminster,
Worcs.
DY14 8RB

A Round Of Appaws

Professional Dog Groomer
C&G Levels 2 & 3 Diploma

Fully Insured

Call or text Jules on
07368359144

aroundofappaws1@gmail.com



A. Farr Painting & Decorating

Give your home a beautiful new look....

Contact:

andyfarr12345@gmail.com 07815 855340

Lisa Steward Ironing services

Hopton Wafers



Please call: 01581065436 for more information

Tenbury's all-comedy pantomime

ROBIN HOOD

IT'S BIGGER AND
BETTER THAN EVER!

WED 14 - SAT 31
DECEMBER 2022

REGAL
TENBURY WELLS

regaltenbury.co.uk



More Clarion Smalls

GUTTER CLEANING SERVICE

No ladders or scaffolding needed.
Can reach any awkward place.

All residential and commercial

Competitive rates

Call Ian on 07870384096

This small box advert costs £34.00
for six months.
With 1,000 copies printed and circa 750
visits a month to our website, this
is one of the most effective places to
advertise your business.
Call the editor on 01299 270642
or email uncle.jim@icloud.com

HIS & HERS

Dog Grooming Parlour

All breeds and
Cross breeds professionally
Trimmed and Groomed



J. A. Guest

Tel: 07790 796 027

Washing Machine
Repairs and Sales
JULIAN BREAKWELL
Telephone 07791 633 746
Repairs to all makes, including
Bosch, Hoover, Zanussi and
Hotpoint
NO CALL OUT CHARGE
FIXED LABOUR COST

Ever After

- Breakfast club
- After school club
- Holiday club
- "Forest schools" outings
- 15hrs education funding
- 24U funding
- Age ranges: 3 months to 11 years



Day Nursery
Cleobury Mortimer

Please contact us on 01299 272 777
Or Call in to see us anytime.

Friendly, Caring Environment for the Community

PAUL LYNCH PLASTERING SERVICES
Recently relocated. Offering all aspects
of plastering.including making and
repairing mouldings, cornices, etc.
Fully insured, references available.

07890 049 592

or

01299 272931

Piano tutor

Francis Engleheart

*All ages — I specialise in teaching adults
without previous experience*

I come to you

07710 288526 • fengleheart@hotmail.com

S. L. CARTER
**PROFESSIONAL PAINTER AND
DECORATOR**

**PLASTERING, TILING, COVING AND
GLAZING**

CLEOBURY MORTIMER

TEL: 01299 272868

MOBILE: 07815 483 029

So, the recently departed Prime Minister managed to crash the economy in record time. We have seen the barking mad proposed tax cuts for high earners ditched ('trickle down'? - you must be joking, as most of the extra wonga would no doubt have ended up in offshore accounts of some kind) as well as the scrapping of the proposed corporation tax reductions. And in a touching display of loyalty, as soon as the smelly stuff hit the fan, she threw her Chancellor and friend under a bus to save her own skin. Note to ex P M: You were in charge so it wasn't all his fault. At least one positive thing came out of this – it does confirm the historical fact that if you embark on a 'Kamikwasi' mission you don't come back... Presumably, she hoped that this would give her a breather but that didn't work and the sharks were soon circling.

She tried to douse the flames by appointing a 'safe pair of hands' in the shape of Jeremy Hunt as Kwasi's replacement and he has responded by junking virtually all her remaining measures save only those already in effect or nearly on the statute book. This still leaves a gaping hole in the accounts, possibly around £40 billion, so look out for spending cuts including a possible cancellation of Boris' lifetime care cap.

Her only chance of survival seemed to be the fact that Tory MP's were split into different factions, preventing them ganging up on her in the short

term at least. Possible candidates included Rishi Sunak, Penny Mordaunt, Ben Wallace and (say it quietly...) one Alexander Boris de Pfeffel Johnson.... Interestingly, one group is lining up behind Jeremy Hunt including his friend, our own Philip Dunne who, you may remember, masterminded Jeremy's bid for the top job in a previous contest. You may also recall that both were present at a private meeting involving a number of MP's (plotters?) in a London pub several months ago. Philip has had ministerial experience in the past, including under Jeremy when he was Health Minister so might he benefit should his friend step up to the grasp the glittering prize?. At present, all involved are busy denying any such ambition but it will be interesting to see whose noses start to grow and when...So, perhaps this is all a salutary lesson to those hoping to make friends and influence people. Still, just what is the point of entering politics if you can't help to make your mates rich(er)?

Just what is happening to Cleobury?. Even going for a walk requires care in threading your way through piles of dog poo and discarded 'vape' packaging, not to mention avoiding being mown down by a spotty youth riding an (illegal) electric scooter. This once quiet rural market town is now riven with anti social behaviour. Sights you never thought you would see here such as gangs of balaclava clad

youths running amok with sticks and bats attacking men in cars, assaults on restaurant owners and others and drug dealing in broad daylight to name but a few, now seem to be almost daily events. How long will it be before someone is seriously injured or worse?. You may remember during the recent public meeting called after the last major battering, we were told that it was our fault for not reporting incidents. This has resulted in Cleobury being considered a lower priority than areas such as Highley with the resulting lack of attention. Should this be the case, and I'm not convinced it is, the remedy is in your own hands. If you see anything that looks out of place such as a strange car full of men parked up for no obvious reason, or packages being handed over take a note of the registration etc or other details and report via 101 or online at : www.westmerciapolice.uk/report

We have comprehensive CCTV cover, although this is not yet accessible from the Police central control room, and this can be a valuable aid in checking suspicious movements. If we take this situation seriously – and we should, as it is likely to affect all of us at some point - let's convince a less than enthusiastic Police Service that there is a problem here and we just might get more support.

Ariadne J Grumpy

NEWSPAPER DELIVERIES



Monday- Saturday

Covers Cleobury Mortimer and Clee Hill

Contact Laura Callwood on 07495 708404

or lauracallwood@outlook.com

WILMAS CLEANING & IRONING SERVICES

Experienced cleaner, very trustworthy and reliable. If you would like your ironing done you can drop to my house. I am available weekdays, and weekend's times/days flexible. References are available upon request.



Please contact me for further details on

07891416477
01299 272 941



Number Nineteen

No.19 Denture Repairs

Dental Laboratory

SPEEDY, QUALITY DENTURE REPAIRS

Cracked/broken dentures repaired the same day.

A 1 HOUR service is available for when time is of the essence, just call to make an appointment .

19 Lower Street, Cleobury Mortimer, DY14 8AL

Email: nevilleweaver@googlemail.com

Phone: 07973856733

All work undertaken by a GDC registered technician



A.B. Plastering
Plus Traditional Lime Plastering

Adrian Booton
PLASTERER

4 Severne Green, Bayton
Nr Kidderminster, DY14 9LL

Tel: 01299 832 838
Mobile: 07974 582 524



TOTAL PROPERTY MAINTENANCE

Fireplaces built for multi-fuel burning stoves,
Plastering, Building & General Maintenance

Rob Taylor

Mobile: 07944 074540

Landline: 01299 832734

Email: rptbuilding@hotmail.co.uk

E.PURSLOW & SON LTD

Stone, Gravel, Cement Supplies

Approved Coal Merchant

Calor Gas Stockists

Tarmacadam Specialists

Car Parks and Driveways

Constructed.

TEL: 01299 270314

David Ward
firewood



Do you need a dependable consistent quality supply of seasoned or kiln dried hardwood and softwood firewood?

Cut and split to suit and delivered in breathable 1.2-cubic metre bags, so no need to restack.

Small delivery vehicle, fitted with crane, can deliver to most locations and situations.

CALL DAVID TO DISCUSS YOUR REQUIREMENTS:

Mobile: 07866 441154

Alan Smith Aerials

Digital TV Installations.

Freeview aerials fitted and distributed around the house.

Freesat box, dish, and cable supplied and fitted. One off payment, **No contract or subscription required.**

Extra points, Repairs, New fits, Set ups, Multi room.

All work is carried out by a *Local*, fully qualified and insured installer.

01299 270007 or 07970 675728

THE CLARION SOCIAL CALENDAR - NOVEMBER 2022

Date	Time	Details
Wed 2 nd	2/4pm	Age UK Afternoon Tea, home made cakes, Sarah CM 272628
	6/7pm	Late Night at the Food Bank, Market Hall
	7.30	Whist Drive at Doddington Village Hall. Sonia Pearsall 01584 890874
Thurs 3 rd	10.00	Rock Pathfinders walk out from St Leonard's church, Ribbesford. PAGE 21
Sat 5 th		CM Rugby Club play away at Harborne
Sun 6 th	10.00	CMFA Social Walk starts from the Parish Church. PAGE 21
Tues 8 th	7.30am	Breakfast Club meets at Cleobury Golf Club, Angela Drennan CM 270 636
		Lunch in the Parish Hall, for only £3! Amazing value, pre-book at CM 271713
	7.30	Cleobury WI meet at the Market Hall to hear Dr Mark Baldwin talk
Wed 9 th	10/12	CoCo Coffee Morning at the Market Hall, Coffee and Cake £2. PAGE 7
	10.00	Walking for Health step forth from the Market Hall
	12.30/2	Soup Lunch at the Melville Methodist Church, Farlow
	7.00	Royal British Legion meets at the Sports & Social Club. Mike Hermolle CM 271384
Thurs 10 th	10/11.30	Free coffee and chat at the Parish Church every Thursday. PAGE 7
	7.30	Fun Quiz Night at The Fighting Cocks at Stottesdon
Fri 11 th	11.00	Armistice Day Silence at the War Memorial
	8.00	Bingo Night at Doddington Village Hall. Sonia Pearsall, 01584 890874
Sat 12 th		CM Rugby Club play away at Bridgnorth
Sun 13 th	10.00	The Remembrance Day Parade gather in Talbot Sq. before marching to the War Memorial for 2 mins silence followed by the memorial service
Mon 14 th	6.30	Creative Writing Group gather at the Town Library, Love Lane
Wed 16 th	7.30	Whist Drive at Doddington Village Hall. Sonia Pearsall 01584 890874
Thurs 17 th	10.00	Rock Pathfinders step out from The Hopton Crown, Hopton Wafers. PAGE 21
Sat 19 th	9.30	Cleobury Country Farmers Market in and around St Marys Church.
Mon 21 st	7.30	The Reading Group meet at the Town Library to exchange views. PAGE 13
Tues 22 nd		Lunch in the Parish Hall for just £3! PAGE 7
	7.30	Yardbird Arts present Blues Night at The Hatch. 01584 881564 to book a place
Wed 23 rd	10/12	CoCo Coffee Morning, Market Hall. Coffee and Cake
	10.00	Walking for Health are out again, enjoying fresh air and the scenery!
	7.45	Clows Top Gardening club gather at Victory Hall for their last meeting of the year!
Thurs 24 th		Royal British Legion outing to the Land of Lost Content in Craven Arms
	7.30	Bingo at The Fighting Cocks, Stottesdon
Fri 25 th	8.00	Vingo Night at Doddington Village Hall. Sonia Pearsall 01584 890874
Sat 26 th	10/2	Christmas Fayre at Farlow & Oretton Village Hall. PAGE 5
		CM Rugby Club play away at Market Drayton
	2.30	Doddington Christmas Fair, Village Hall, Doddington. Good parking. PAGE 13
Date	Time	Details
Mon 28 th	7.30	The Nearly Dead Poets Society share wine & Christmas pies at the Library
		LOOKING FORWARD TO DECEMBER...
Fri 2 nd	8.00	Bingo Night at Doddington Village Hall. Sonia Pearsall 01584 890874
Sun 4 th	11/4	Rock Church Christmas Fayre. Lots of stalls offering gifts. PAGE 5
Wed 7 th	12.30/2	Christmas Soup Lunch at Melville Methodist Church, Farlow. PAGE 5
		AND A REMINDER ABOUT THESE REGULAR LOCAL EVENTS...
Mon	8.00	Bingo with Susanne in the Market Hall, except bank holidays
Tues	2.00	The Friendship Club meet in the Parish Hall
Thurs	10.00	Drop in at St Marys Church to chat and maybe share a problem?
	7.00	Lessons in the Birth Dance and good health in the Market Hall

Firewood

Seasoned logs, barn dried & ready to burn.
Free local delivery -01584 890993 or 07970878224
Various size loads available



Paul Harding Tree Services



Lower St Garage

7 Lower St, Cleobury Mortimer. DY14 8AA



- M.O.Ts on cars, motor bikes & small commercial vehicles
- Tyres, Tyre fitting,
- Puncture repair and Tracking.
- Diagnostics, Air conditioning
- Welding.
- Service and Repairs to most vehicles.
- Delivery and Collection Service Available

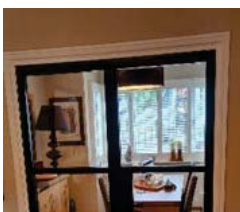
Contact The Team at Lower St Garage on: 01299 270208



Stove Installations, Service and Repair

- All solid fuel wood burners and boilers supplied and installed
- Chimneys relined and twin wall systems built
- Chimney Pots, Cows, Carbon Monoxide alarms and Air Bricks fitted
- All Stoves and Fires serviced including chimney sweep
- Hetas Landlord Safety Certificates

Tel: 01299 272712 Mbl: 07807 343006
email: info@rweaversservices.co.uk



Family run business of 30 years, call us for a free no obligation quote

Finance available, buy now and pay later

5 Lupin Works, Worcester Road, Kidderminster DY10 1JR
Phone: 01562 822855 – Email: sales@twshq.com



Tele:- 01299-272757 *Hands on Printing* **Email:- clickclick2@hotmail.co.uk**
Mobile 07708 587787

All digital media printed to 6"x4" 5"x7" 8x6" 10"x8"
CANVAS WRAPS FROM 12"X16" - 30"X 20"
ENLARGEMENTS FROM 12X10" TO 24X36"
 FROM PHOTO'S, DIGITAL MEDIA & 35mm SLIDES

PASSPORT PHOTO'S ONLY £5-00
WHILE YOU WAIT

MOST VIDEO FORMATS TRANSFERRED TO D.V.D.
 USB or SD cards

INCLUDING VHS - VHSC - SONY 8 - DIGITAL 8 - Hi8 - MINI DV & BETAMAX
 REEL TO REEL & CASSETTE
AUDIO TAPES & OLD LPs TO CD

PHOTO & VIDEO FILES TRANSFERRED FROM MOBILES TO DVD ETC.

STANDARD 8 - SUPER 8 FILMS TRANSFERRED TO D.V.D.
 USB or SD cards
DAMAGED PHOTOGRAPHS RESTORED ETC.

BIRTHDAY AND CELEBRATION BANNERS

Look Who's 50 Today!

Video Filming Service

VINYL BANNERS - BUSINESS CARDS - SHORT RUN FLYERS INVITATIONS - ORDERS OF SERVICE

B-W OR COLOUR PHOTOCOPIES
SELECTION OF PHOTO FRAMES
 Traditional Studio Portraits and Pet Photo's

43, High St.
 Cleobury Mortimer.
 DY14 8DQ

 **LACON CHILDE SCHOOL** 
 the future begins here
 Headteacher: Darren Reynolds

1735



Lacon Childe School, Love Lane, Cleobury Mortimer, DY14 8PE Tel. 01299 270312 email - admin@lacon-childe.org.uk


LUDLOW SALVAGE
 ~ Est 2017 ~

Reclaimed Building Materials
 and Architectural Antiques

Station yard, Station road,
 Woofferton, Ludlow SY8 4AW

T 07805 312168
@ ludlowsalvage@gmail.com
f /ludlowsalvage
ig /ludlowsalvage

WWW.LUDLOWSALVAGE.CO.UK

BoomeranG
 of Cleobury Mortimer
 private hire travel

- Friendly, reliable service
- Local & long distances
- Fully council licensed (up to 12 passengers)
- Airport transfers
- Courier service
- All occasions catered for

Tel: 01299 271257, Mob: 07411 142755, Email: stuart.boomerang@yahoo.co.uk

Cleobury Mortimer Golf Club

At Cleobury Mortimer Golf Club we believe that a really enjoyable golf day takes more than just a great golf course. We make sure that your whole experience, from the friendly welcome in the golf shop to your drinks and meal in our relaxed clubhouse, is all part of a day you'll remember.



Everyone Welcome

Membership available.

Just some of the many benefits of joining Cleobury Mortimer Golf Club

- Access to full length 27- hole golf course
- Opportunity to achieve and maintain a handicap
- Family, Friendly Environment
- Playing opportunities at all times of the week
- A range of competitive opportunities
- Open dawn to dusk 363 days a year.

We look forward to meeting you at Shropshire's friendliest golf club.



- 📞 01299 271 112 (ext 1)
- ✉️ pro@cleoburygolfclub.com
- 🌐 www.cleoburygolfclub.com

CLEOBURY MORTIMER NEIGHBOURHOOD DEVELOPMENT PLAN

Over the past three years a team of volunteers has worked on the Cleobury Mortimer Neighbourhood Development Plan, engaging with the public and other interested parties under the oversight of the Town Council.

National and County planning policy requires a minimum of 200 houses to be built here. Deducting the 80 properties already permitted (or recently built) brings this number down to 120 new homes, plus a site to create more employment - all to be built before 2038.

The responses to the public and statutory consultation on the Draft Neighbourhood Development Plan (Regulation 14), and the related Strategic Environmental Assessment have been considered and adjustments made to the Plan.

The next step is for the Town Council to consider, debate and vote on a motion to submit the NDP to Shropshire Council Local Planning Authority. Thereafter the LPA are responsible for the process - which would require a full public referendum before the Plan can be made law.

The Town Council vote will take place during an extraordinary meeting of the Town Council in mid November (Date to be confirmed) commencing at 7:00pm at Cleobury Country. The public will be welcome to attend.

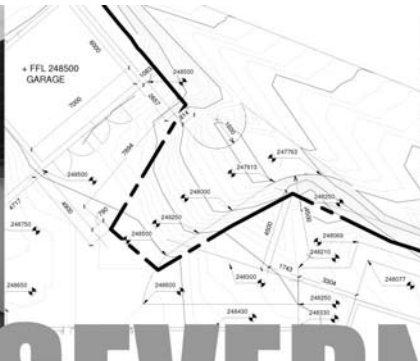
If the Town Council vote in favour of the Plan, thereafter the process will be the responsibility of Shropshire Council's Local Planning Authority team and is summarised as follows:

1. The LPA will publicise the plan for a six week period (known as Regulation 16)
2. The LPA will appoint an independent examiner to assess the plan and issue a report. If the plan meets the basic conditions, he/she will recommend that the plan proceeds to referendum stage.
3. Shropshire Council will organise a referendum through their elections unit and as we have both residential and business areas, there will likely be two referendums, one for residents and one for non-domestic rate payers.

At this stage, it is difficult to predict the timing of the next stage but our best estimate is that a referendum could be held in spring 2023. Subject to a simple majority vote in favour the Plan could be made legal by early summer 2023.

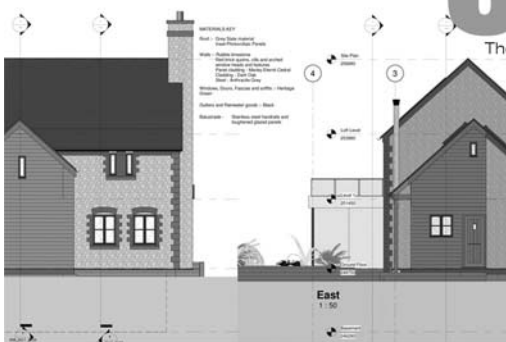
This NDP as with any new development will also be subject to the normal planning process. Subject to a positive referendum vote, we do not expect formal planning applications until late 2023 and possible start on the sites sometime in 2024 onwards.

If the NDP comes into force, the LPA and planning inspectors must consider all future planning applications and appeals in accordance with the policies contained within the Neighbourhood Development Plan.

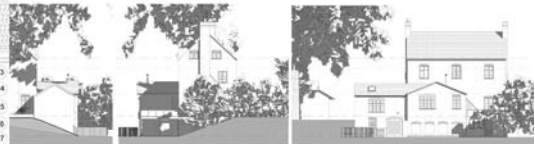
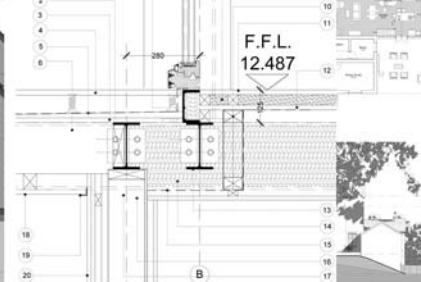


SEVERN

architects



The Guard House, Cleobury Mortimer, DY14 9BD



We are a friendly Shropshire based architectural practice with plenty of experience in all kinds of residential projects large and small. Using the latest 3D software package and technology we can turn your virtual dream home into a reality.

Contact us now on 07825 759484 or email julie@severnarchitects.co.uk for your consultation

Our Architectural Design Services include

- Design & Feasibility Studies
- General project Advice
- 3D Modelling
- 2D CAD Drawing
- Planning Advice and Submissions
- Building Regulation Applications
- Tender & Construction Drawings
- Contract & Project Management

RIBA 

Chartered Practice

KIDDERMINSTER

SELF STORAGE AND REMOVALS

STORAGE

Free insurance . Flexible Terms
Fixed Price Guarantee . No hidden costs

REMOVALS

Professional Removal Service
Est. over 25 years

PACKAGING MATERIALS

Boxes, Bubblewrap, Tape Etc. for sale
Free local deliveries on orders over £20

01562 744088

www.kidderminsterselfstorage.co.uk

Unit 11 Finepoint Way, Stourport Road, Kidderminster DY11 7FB
info@kidderminsterselfstorage.co.uk



Cleobury Mortimer Horticultural Society

The Horticultural Society is one those local bodies that thrives on its members' love of country life and the benefits they, their families and friends all find in a common enthusiasm. One of the outstanding features you will find within the Cleobury Country area is the allotments high on the ridge to the south of the town. That facility exists through the generosity of the Robinson family; the management of it is in the hands of the Horticultural Society, through Steve Todd.

When the lime trees that have added shade in the summer to our High Street were converted from a normal form of growth to pleaching, which spreads the summer shade wider, the long term management was in turn passed to the same body. The trees are the property of the County Council, overseen by the Town Council; the care of those trees rests with the Horticultural Society. All of them unpaid volunteers, people who simply care.

An outstanding donation was recently given to the Society in memory of the late Joyce Wakeman, a long term member and very enthusiastic member herself. She had made it clear that the money should be used as part of the Society's charitable activities and funding a competition for younger children as the Covid restrictions were lifted was an ideal opportunity. So 'Learning to Grow Food' was launched, taking in local nurseries, primary schools and the special school. A lovely idea, helping children understand where food comes from and how it's grown.



One of the Joyce Wakeman watering can trophies presented to the Society by her family.

The children were provided with seed trays and covers, plus peat-free compost and seeds for sprouting. Their task was to grow them, find out more about how seeds develop roots and grow and how they are then harvested, sold and used as part of a healthy diet. That was quite an ambition for such young children, but four nurseries and five schools spread across Cleobury Country took part, involving about 150 children and young people. All greatly enjoyed by both pupils and their teachers and the winners in the two categories - pre-school and schools - were awarded mini greenhouses.



Winners of the pre-school category Joyce Wakeman trophy, children from Abkats Nursery at Catherton.

In a world where too many clubs and associations find membership dropping as members age, it's a refreshing change to hear of a society looking forward by encouraging early interest in what could become a lifetime interest.

Membership of the Society is open to anyone with an interest in gardening. What you will get, above all else, is a warm welcome from friendly people, whether you already have lots of expertise or want to learn and get advice. You'd be very welcome to go along to the Annual General Meeting on Monday 14 November at 7.30pm at St Mary's Place Community Room to find out more. Annual membership costs just £15 per person, or if you'd like an allotment, it's £50 for a full plot or £30 for a half plot, which also includes membership of the Society and all its activities. Contact the Secretary Linda Ashman (edandlinashman@gmail.com) or, for allotments, Steve Todd (stevetodd@uwclub.net).

ONE STOP ROOFING

The Flat Roof Specialists

- Rubber, Fibreglass & Felt
- Re-pointing & Chimney Repairs
- Fascias & Guttering



Take advantage of our offer: Replace your flat roof Making EPDM (rubber) your choice for a long lasting, weatherproof & high slip resistant membrane, with a lifespan of 50 years, **get it for the same price as felt**, which only carries a 10 year guarantee!

Replace your flat roof with EPDM (rubber) & add a skylight or lantern, giving extra light to your room starting **from as little as £400!!**

Freephone 0800 0855277 * 07538 471274

www.onestop-roofing.co.uk

onestoproofinguk@gmail.com

Family business est. 35 years.
All repair work undertaken

Proud members of
Checkatrade.com
Where reputation matters

CLEOBURY SEAFOOD & FREEZER CENTRE

6 Newhouse Farm - Tenbury Road - Cleobury Mortimer

01299 271345

Ready Meals

*We stock a wide range of ready meals, from the ordinary to the extra ordinary !
Plus a range of Vegetarian, Gluten Free and Vegan meals.*

Mr Dave's

*Meat, Chicken, Prawn and Vegetarian Balti, Madras Curry
Mr Dave's extra large naan, plain and garlic & coriander.*

Fish

*Cod, Haddock, Plaice fillets, Sea bass, Lemon sole, Cod Loins, Smoked Haddock.
Battered & breaded fish fillets. Young's Jumbo Cod Fish Fingers.(Very Popular)*

Seafood

*Raw king Prawns, Squid, , whitebait, cooked tiger prawns, scallops, seafood cocktail.
Hot & Spicy Prawns, Breaded Cod & Plaice Goujons*

*New Fish Cakes Thai Style Cod & Prawn, Smoked Haddock, Mozzarella & Spring Onion,
Sea Bass, Cod, Lime & Ginger.*

Fruit and Vegetables

Potato Products

Bannister Jacket Potatoes, Oven chips, Sweet Potato Fries Twister Fries, Hash Browns, Spicy Wedges

Chicken Products

Southern Fried Breaded Chicken Steaks, Breaded Chicken Goujons, Chicken Nuggets, Chicken Bites.

Gateaux for all occasions

BENNETTS ICE CREAM

Opening Times 9am to 4.30pm Mon to Friday. Saturday 9am to 12

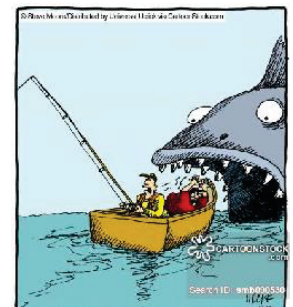
Visit our web site www.cleoburyfreezercentre.co.uk

Cleobury Clarion November 2022

Page 54



"We tried artificial flies. We tried lures. We tried live bait. Nothing works ... it's like they're psychic!"



"Blood-curdling screams. Hayes, will do nothing to help us catch a fish."



Home Support Services

All staff enhanced DBS checked with over 20yrs experience and training within the local authority/social services mainstream and dementia care sector. Fully insured.

Are you in need of support with the following basic day to day tasks?

Assistance during the day or night	Completing Forms
Companionship	Pet Care
Shopping/Household tasks	Attending social events/ appointments

Contact Liz
Tel: 01299 271623
Mob: 07826 929222
liz@lifelifeathome.co.uk

Other support services available on request.

www.lifelifeathome.co.uk

Contact Tracey
Tel: 01299 211660
Mob: 07957 659909
tracey@lifelifeathome.co.uk



BOOK YOUR MOT WITH US



01299 841 391











SERVICING & REPAIRS TO ALL MAKES & MODELS

■ Clutches & Cambelts	■ Exhausts, Batteries & Tyres	■ Wheel Alignment
■ Diagnostics	■ Recovery	■ Welding

 Follow us on Facebook: LewisMotorsKinlet



KINLET C OF E PRIMARY SCHOOL

Love to Learn – Learn to Love








- Outdoor play areas
- Kind – Inspire – Nurturing – Learning – Eco-friendly -Teamwork

- Small family atmosphere

www.kinlet.shropshire.sch.uk

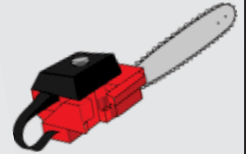
admin@kinlet.shropshire.sch.uk

Telephone: 01299 841210





N.R. Evans Landscaping



- Grass cutting
- Strimming
- hedge cutting
- garden and site clearance
- Fencing, including:
 - Panel fencing
 - Post and rail fencing
 - Picket fencing
 - Stock fencing

domestic and commercial customers welcome

Call for a chat on 07535 902847

Email: nrevansgardenmaintenance@gmail.com Facebook: N.R.Evans Garden Maintenance

Booton Brothers



Construction

Rich: 07445298747

Mike: 07853225401

bootonbrothers@outlook.com

All building work undertaken

Elite Sweeps

Professional Chimney Sweep

& HETAS Stove Installer

- ✓ Prompt, reliable & friendly service.
- ✓ Cowls and Chimney Pots fitted.
- ✓ Fully qualified and fully insured.
- ✓ Guild certificates issued after every sweep.
- ✓ HETAS Approved Installer.



Call Eddie Tel. [01299 382222](tel:01299382222) / [07895 612915](tel:07895612915)

www.elitesweeps.co.uk



I.P.T. GROUND SOLUTIONS

Over 30 years experience

For all pipe installations:

- Sewage • Storm drainage
- Blockage/Repairs • Ditches
- Grass Cutting / Hedge Trimming
- Driveways • Ground clearance

For all your ground needs

Contact Ian on:

T: 07870 384 096

E: ian.ptaylor@yahoo.com

W: iptgroundsolutions.co.uk

Welcome to November's issue on the subject of Scamming.

This month I want to copy some of the information that comes through the local and National agencies. The attached comes from the Economic Crime unit at West Mercia Police.

INVESTMENT FRAUD

This is a warning on 'get rich quick' schemes as investment fraud soars among young professionals on social media. 'Get rich quick' investment opportunities are soaring amongst young professionals, with more than £890 million lost to investment fraud last year.

Criminals are evolving the way that they target people with bogus investment opportunities, with many victims now being targeted on social media.

The total amount lost to investment fraud in the 2021/22 financial year rose by a staggering 49.5 per cent on the previous period (£890,916,169 up from £596,053,731). New data from the National Fraud Intelligence Bureau (NFIB) also shows there were 26,170 reports of investment fraud to Action Fraud in the same period, meaning victims lost an average of £34,043.41 each.

How to spot the signs and protect yourself

- ✓ Before deciding to invest, always do your research and do not let anyone rush you. Only criminals will put pressure on you to make a quick decision. Stop, take time to think and consult trusted friends and family members before parting with your money.
- ✓ Be cautious if you are asked to change money into cryptocurrency to invest or make a payment via cryptocurrency. This is often a tactic used by fraudsters.
- ✓ Be aware that some investment opportunity approaches can come via social media. Always undertake additional research to check the validity of such an opportunity.
- ✓ Fraudsters have been known to hack social media accounts to promote bogus investments. If you are making an investment based on a recommendation from a friend or family member sent via social media, check that this has actually been sent by them.
- ✓ Scammers will often create professional looking websites and utilise fake business premise locations to give an impression of legitimacy.

Never let anyone take control of your phone or computer for any reason. A reputable business would never do this. Check on the FCA website to see if an investment business is authorised by the Financial Conduct Authority.

ENERGY BILL SCAMS

A recent report from a potential victim of an Energy Bill Scam went as follows:

A call was received claiming to be from the person's Energy Company and asking for a meter reading, serial number, bank details and other personal details. Fortunately, the person did not have the information to hand and rang back the Energy Company on the listed number, so in this case no money was lost.

Never provide financial or personal details over the phone unless you are 100% sure the caller is genuine, always use the listed telephone number on the invoice.

ROMANCE FRAUDS

There has been a recent spike in Romance Fraud reports centred on the Worcester area, where victims have lost money to Scammers.

Please remember never to give out money, gift cards or any other form of payment to someone you may have met on the internet but never met in person, however convincing their request may be.

CLARIFICATION

Premium Rate Telephone Number Scam. This Scam, which has been highlighted before, applies equally to calls to DVLA where victims have inadvertently called a third-party premium number displayed on the Internet and ended up paying unsolicited call charges and fees.

So, when looking for Government Department contact details, always use the official Government Services Website – GOV.UK

Take Five to Stop Fraud

Stop: Taking a moment to stop and think before parting with your money or information could keep you safe.

Challenge: Could it be fake? It's okay to reject, refuse or ignore any requests. Only criminals will try to rush or panic you.

Protect: If you think you've been a victim of fraud, contact your bank immediately and report it to Action Fraud online at actionfraud.police.uk or by calling 0300 123 2040.



EVERYTHING INTERIOR UPHOLSTERY

REUPHOLSTERY SERVICES:

- AUTOMOTIVE
- CARAVANS
- CAMPER VANS
- TRADITIONAL & MODERN
- COMMERCIAL & BESPOKE
- DOMESTIC
- CARPET & UPHOLSTERY CLEANING
(in partnership with WE GLEAM)

OVER 30 YEARS EXPERIENCE



CONTACT US TODAY

Unit 19 Old Station Business Park, Cleobury Mortimer, DY14 8SY
07961 712683 / 07961 792103
www.everythinginterior.co.uk
email: everythinginterior@outlook.com

Are you thinking about Equity Release?

- **Free** Advice
- **No negative equity guarantee**
 - **Pay off** existing debts
- **Help** your family when they need it most
 - **Boost** your retirement fund
 - **Stay** in the home you love
- Access to highly competitive **life insurance** policies
- Qualified **Will Writer** so call me to have your Will written

Call me now to find out more

Equity release will reduce the value of your estate and may effect your entitlement to means-tested benefits.

07966366505 | Stephanie@midasfp.com | www.midasfp.co.uk
Midas Financial Planning Services Ltd is authorised and Regulated by the Financial Conduct Authority



I'm Stephanie

**07966
366505**

Bespoke framing and mounting for:

- Artwork
- Photographs
- Canvases



The Framing Studio Cleobury Mortimer

Paul Serrell-Cooke
07791 378240

Bringing artwork and images to life



ARE YOU LOOKING FOR Independent Financial Advice?

Consequential Planning are your local independent financial advisers. We have a highly qualified team with extensive experience in all aspects of financial planning. We can offer help and advice on investments, pensions, protection and mortgages.

Telephone 01299 407128
to arrange a free financial review or visit:
www.cnsq.co.uk





Burning Blocks

www.burningblocks.co.uk



A safe and easy to use alternative for logs for both wood stoves and open fires

Discount for local delivery quote: "family10" at the checkout

- Easy to light / roaring fire in under 5 mins
- Easy to stack / 10kg packs
- High heat / similar to coal on output
- Each briquette lasts over an hour
- Low moisture / 8% moisture maximum
- Store undercover

UK wide delivery available, approx. 2 days

buy online at www.burningblocks.co.uk

For more information:-

Email: burningblocks@gmail.com Website: www.burningblocks.co.uk FB: <https://www.facebook.com/burningblocksbriquettes>



Richard Haines

The Worcestershire Chimney Sweep

- ◆ Traditional & Power Sweeping Services
- ◆ Certified Chimney Sweep
- ◆ Insurance Recognised certificate issued



M: 07752 116629 T: 01584 781358 E: lostcity5@hotmail.co.uk

www.theworcestershirechimneysweep.co.uk




LUDLOW FIREWOOD

~ Est 2019 ~

Suppliers of Premium Grade Ready to Burn Firewood, Beautifully Crated and Delivered to Your Door



T 07949 318014

@ ludlowfirewood@gmail.com

IG /ludlowfirewood

F /ludlowfirewood

Station yard, Station road, Woofferton, Ludlow SY8 4AW

WWW.LUDLOWFIREWOOD.COM

Available in Barrow bags and nets for all your access requirements.

Following a number of incidents in recent months and the public meeting held by the police at the Parish Hall we hope the following information will be of help.

If you become aware of a crime or anti-social behaviour, call the police on 101 if it is non-urgent. Alternatively, you can email our local police team on ch.snt@westmercia.police.uk or make a report through the West Mercia Police website www.westmercia.police.uk.

You can also contact Crimestoppers to report a crime anonymously, either by telephone 0800 555 111 or online on <https://crimestoppers-uk.org>. They will pass the information about the crime to the police.

Always dial 999 in an emergency, if you or someone else is in immediate danger, or if a crime is in progress.

You may have seen some **Operation Snap** signs around town. You can report any driving offences such as:



- Someone using a device such as a mobile phone
- Someone driving without due care and attention
- Someone disobeying traffic laws.

Send your photos or footage to West Mercia Police at www.westmercia.police.uk/operationsnap

Community Speed Watch

Community Speed Watch is a scheme to help reduce speeding traffic. It is volunteer led working in conjunction with the Town Council and West Mercia Police. Would you be interested in volunteering to help? If so, please contact the Town Council office on 01299 271154 or email council@cleobury.org.uk. Full training and speed detection equipment is provided by West Mercia Police.



Neighbourhood Matters



This is a community messaging service. You can sign up through the West Mercia Police website at www.westmercia.police.uk to receive local police alerts; information about crime in your area, find out about drop-in sessions, answer surveys, and more.

The Love Cleobury initiative has been developed in conjunction with St Mary's Church to ask this community to support and care for all who live here. Cleobury Mortimer is a welcoming town that looks forward to a thriving and sustainable future. We welcome all who live here, and also those who will join us in the years to come.



And finally, the Christmas Lights Event will be held on Saturday 26th November. Lights will be switched on at 5pm.



Our Services



SOLAR PV



EV CHARGERS



AIR SOURCE
HEAT PUMPS



GROUND SOURCE
HEAT PUMPS



BATTERIES



VENTILATION



UNDERFLOOR
HEATING



RADIATORS

About us

EnergyZone is one of the largest renewable energy companies in the Midlands, having provided domestic and commercial sustainable energy solutions for over 20 years.

Based next to Hobsons Brewery in Cleobury Mortimer, we are your local experts in renewable and low carbon energy.

The current energy crisis has been incredibly eye-opening as we come to realise how reliant we are on other countries for fuel. Wouldn't it be nice to become more independent and less reliant on the volatile energy prices... well, that's where we can help!

What can EnergyZone Offer?

- With over 130 years combined experience, we are keen to help with all your energy enquiries and deliver impartial advice.
- Totally free desktop quotes for Solar PV and Heat Pump systems completely unique to your property to show you exactly how much you could save.
- Self-consumption gadgets to help you utilise all of your generated energy. Whether its a Smart Electric Car Charger, Immersion Diverters or Battery Storage Units, we can help you become more independent from the grid.
- Ensure your heating is as efficient as possible, through underfloor heating installation, radiator upgrades and smart hot water cylinders.
- Advice on all Government Grants and Incentives.
- Local support with annual servicing through our in-house EZCare package.

Get in touch today to start renewing your energy!

For your peace of mind, EnergyZone has the following accreditations:



01299 270011



sales@energyzone.co.uk

Community Contacts for Clarion Readers

CEMETERY ADMINISTRATOR	Theresa Ray	07703 965 064	theresa.25016@hotmail.co.uk
CLEOBURY COUNTRY CENTRE		01299 272300	In Love Lane, 9 to 5 Mon to Fri.
CLEOBURY DENTAL PRACTICE		01299 271747	www.cleoburydental.co.uk
CLEOBURY CARERS	Michelle	01743 341995	carerssupport@shropshire.gov.uk
CLEOBURY COMPASSIONATE COMMUNITIES	Katja Jones	07966 080111	Tuesday and Thursday at the Medical Centre
CLEOBURY MORTIMER LIBRARY		01299 272301	Open 9 to 7 Mon, 9 to 5 Tues/Fri and 10 to 1 Sat.
LOCAL POLICE	PC Wayne Strangwood	07773 054 587	wayne.strangwood@westmercia.pnn.police.uk
CLEOBURY MORTIMER GUIDES	Fiona McCallum	07805 737 555	
CLEOBURY MORTIMER SCOUTS	Lowri Hughes		cleoburybeavers@gmail.com
CRIMESTOPPERS		0800 555 111	Free Police contact. Talk in confidence, to report any crime.
DOMESTIC VIOLENCE HELPLINE		0800 783 1359	Women's Aid, 24 Hour support:
HOME FROM HOSPITAL		01584 878046	Help over the first weeks back home from Age UK
MARKET HALL	Kim	01299 272732	markethall@cleobury.org.uk
MEDICAL CENTRE		01299 270209	Out of surgery hours, use the Shrop Doc Service.
SHROP DOC		111	Service available evenings and weekends
THE MEN'S SHED	Pete Blackburn	07776 243 584	petblack@me.com
THE PHARMACY		01299 270219	Closes for half day on Saturday. Delivers prescriptions
ST ELIZABETH'S CATHOLIC CHURCH	Angela Flowers	01299 270318	Sunday Mass at 9.00am
NIGHTINGALE NURSING FUND	Rosemary Abbiss	01746 718451	
TOWN COUNCIL	Clerk Matthew Sheehan	01299 271154	Cleobury Country Centre 9 to 2 pm, Mon to Fri. www.cleobury.org.uk . Council meets in the Centre on the first Monday of the month
POST OFFICE		01299 270211	In the Select and Save Grocery Store, Church Street
SAINT MARY'S YOUTH PROJECT	Mark Greaves	07828 116810	mark.stmarys@live.co.uk
SHROPSHIRE COUNCIL		0345 678 9000	
SOUTH SHROPSHIRE YOUTH FORUM		01584 874922	
VOLUNTARY CAR SCHEME		01299 666119	Mandy Smith
WASTE DISPOSAL		0345 678 9007	The contractor is Veolia
WATER SUPPLY EMERGENCIES	Severn Trent	0800 783 4444	
NEWLIFE CHURCH	Pastor E Stirrup	01562 630595	Sunday services at 10.30

Collect the Clarion in Cleobury from: Select and Save Grocery, Londis Store, Cleoburrs, Cleobury Cafe, The Severn Hospice Shop, Mid Counties Co-op, Purslows, and The Library.

Out in Cleobury Country at: Heath Farm Meats, **Bagginswood**; **Clee Hill Stores**; **Clows Top Stores**; The Sun and Slipper, **Mamble**; **Hopton Bank Service Station**; ; **Ludlow Library**; **Mahorall Cider Farm**; The Colliers Cafe & Shop, **Rock**; The Fighting Cocks, **Stottesdon**; The Duck Inn, **Chorley**; The Live and Let Live, **Neen Sollars**; The Eagle and Serpent, **Kinlet**; Parker Motors, **Ditton Priors**.

Copies are also available from the Parish Churches in: Cleobury Mortimer, Bayton, Doddington, Hopton Wafers, Milson, Neen Savage and Neen Sollars.

Missed your Clarion? Cleobury Mortimer Library keeps the current month's copy on file and all back issues are available to read as pdfs from www.cleoburyclarion.co.uk.

DEADLINE FOR THE DECEMBER/JANUARY ISSUE: NOVEMBER 22nd.

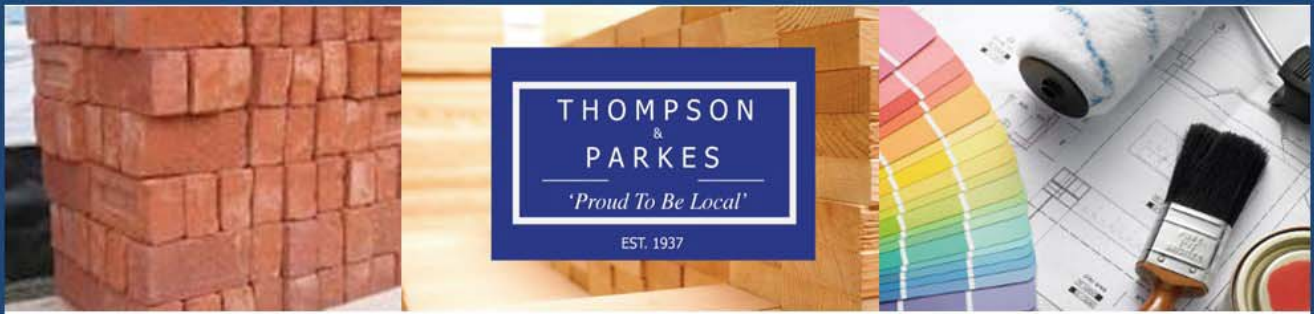
PLEASE NOTE THAT THIS IS THE LAST POSSIBLE DATE TO RECEIVE REPORTS.

Editor and Advertising Sales: Jim Reynolds, 4 Childe Road, Cleobury Mortimer, Shropshire DY14 8PA. Telephone: 01299 270642 Mobile: 07410 977 212

E-Mail: editor@cleoburyclarion.co.uk or uncle.jim@icloud.com

The Clarion On The Web: www.cleoburyclarion.co.uk

Printed by Badger Print and Design of Shifnal, 01952 730511



Your local specialist supplier of
Insulation, Timber, Plywood and all Building Materials

THOMPSON & PARKES

SANDSTONE - Best offer locally!

A natural product, Stoneplus Raj Indian sandstone has subtle tones and ideal for traditional patios.

15.25m² patio packs including 900 x 600, 600 x 600, 600 x 300 and 300 x 300 slabs

Just £24.50/m² - £373.63 +VAT per pack

While stocks last and available at all outlets!



Proud to be Local

www.thompsonandparkes.co.uk

Stocking and Delivering all Your Building and DIY Materials

Kidderminster 01562 745881
Oldington Trading Estate DY11 7QP

Oreton 01746 718414
Cleobury Mortimer DY14 0TH

Stourport 01299 534545
Minster Road DY13 8AB